

Air. Pressure. Motion. ▶▶▶▶▶▶

**airtec**



**Air service units  
series Y (NPTF)**



**Series FY**

Filter,  
 1/4 NPTF to 1/2 NPTF  
 11.072

**Series RY/RYP**

Pressure regulator/  
 precision regulator,  
 1/4 NPTF to 1/2 NPTF  
 11.077



**Series FRY**

Filter/regulator,  
 1/4 NPTF to 1/2 NPTF  
 11.081



**Series OY**

Lubricator,  
 1/4 NPTF to 1/2 NPTF  
 11.084

**Series FROY**

Filter, Regulator, Lubricator  
 combination,  
 1/4 NPTF to 1/2 NPTF  
 11.087



**Series Y**  
**Air service units**  
**1/4 NPTF to 1/2 NPTF**



**Series KY**

Ball valve,  
 1/4 NPTF to 1/2 NPTF  
 11.090



**Series NY**

Non-return valve,  
 1/4 NPTF to 1/2 NPTF  
 11.092



**Series VMY**

3/2-way inline valve,  
 1/4 NPTF to 1/2 NPTF  
 11.095



**Series DAY**

Soft start valve,  
 1/4 NPTF to 1/2 NPTF  
 11.098



**Series TY**

Distribution block and  
 pressure switch,  
 1/4 NPTF to 3/4 NPTF  
 11.100

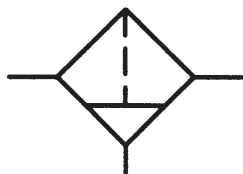
**Accessories for  
 Series Y**

11.103



**Technical data for series**

**FY**



**Order code**

**FY-912-00-5-1201**

**Series**

**FY\*** = standard  
**5 µm**  
**FYA** = activated  
carbon  
filter  
0.005 µm  
**FYF** = finefilter  
0.3 µm  
**FYM** = microfilter  
0.01 µm

**Size**

914 = 1/4 (Y1)  
937 = 3/8 (Y1)  
938 = 3/8 (Y2)  
912 = 1/2 (Y2)

**Filter element**

**5\*** = 5 µm  
**3** = 0.3 µm  
**1** = 0.01 µm  
**A** = activated  
carbon  
filter

**Pressure range**

00 = standard

**Options for digits No. 2, 3, 4**

**201\*** = semi-automatic drain  
**301** = auto drain, opened  
without pressure  
**401** = auto drain, closed  
without pressure

**Options for digit No. 1**

**1\*** = polycarbonate bowl  
with PA-guard  
**3** = metal bowl  
with sight glass

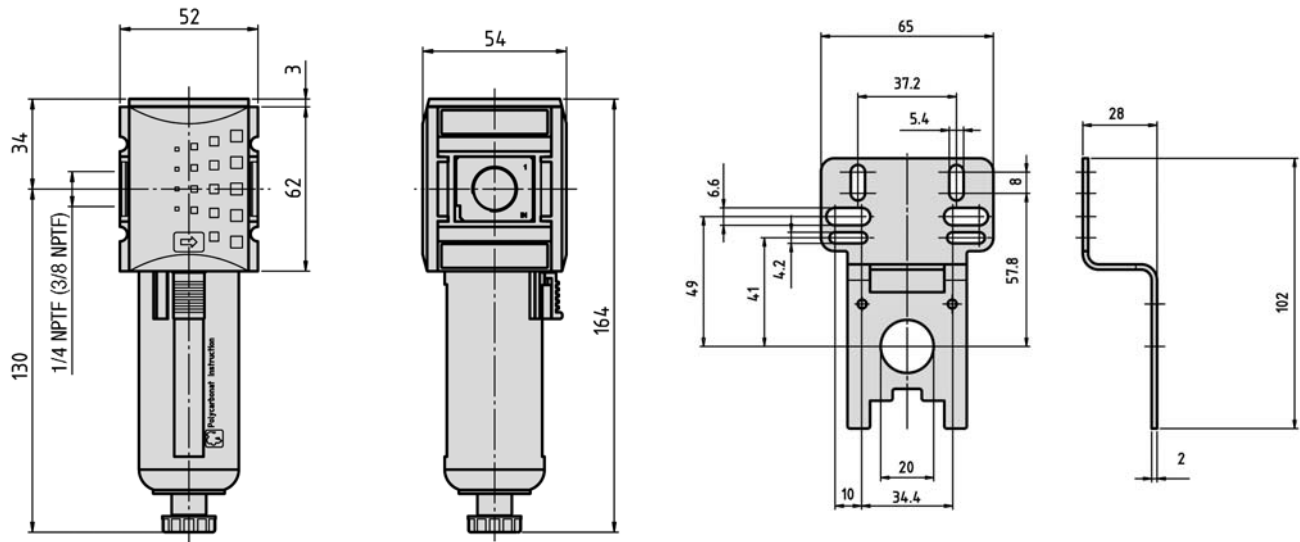
Order number Please complete according to order code.	FY-914-00-...	FY-937-00-...	FY-938-00-...	FY-912-00-...
Connection	1/4 NPTF	3/8 NPTF	3/8 NPTF	1/2 NPTF
Series	Y1		Y2	
Nominal size*	2200 NI/min (2.236 Cv)	2400 NI/min (2.44 Cv)	3500 NI/mi (3.557 Cv)	
Mounting	vertically, drain plug at bottom			
Input range	0.5 ... 16 bar (7.25 ... 232 psi) Min. 1.5 bar with auto drain		0.5 ... 16 bar (7.25 ... 232 psi) 1.5 ... 12 bar with auto drain	
Temperature range	– 10 °C ... + 50 °C (+ 14 °F ... + 122 °F)			
Materials	Housing: Grivory (PA66); Connection: die cast Zinc			
Bowl volume	max. 28 cm³		max. 49 cm³	
Weight*	0.212 kg (0.467 lb.)		0.361 kg (0.796 lb.)	

\* = standard type

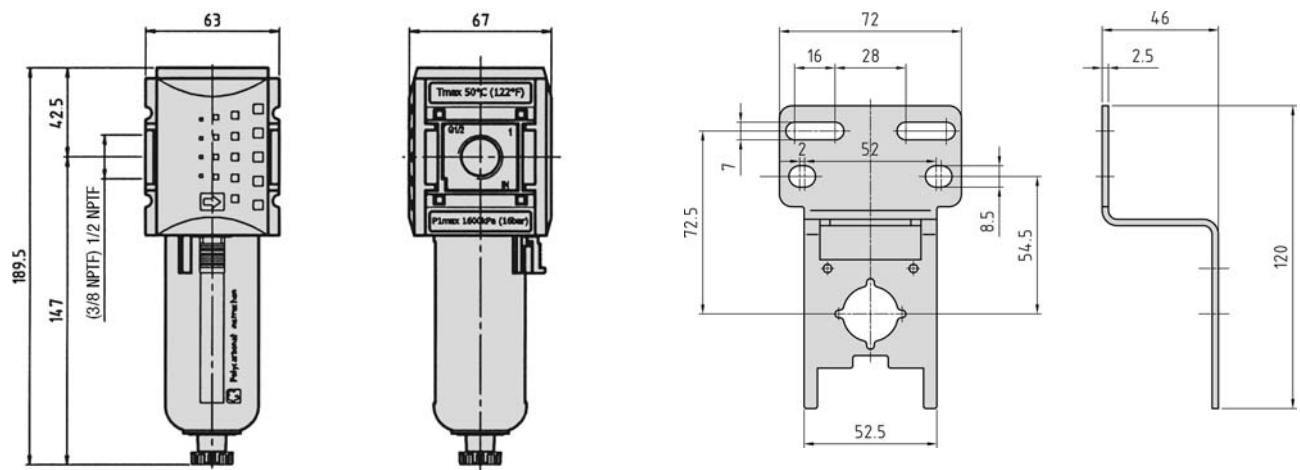
**Dimensions for series**

**FY**

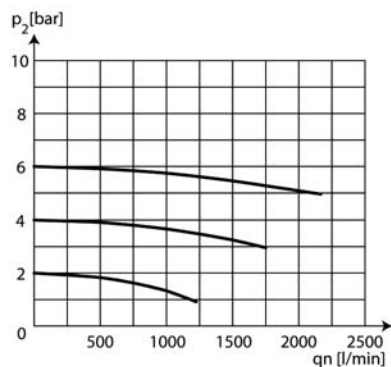
**FY-914, FY-937**



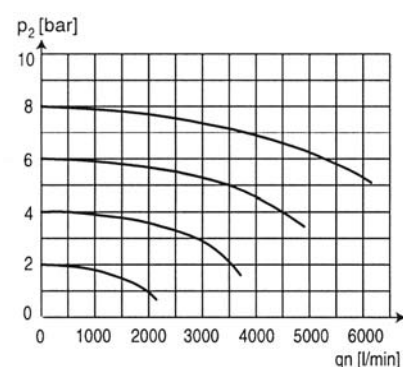
**FY-938, FY-912**



**Flow characteristic FY-914, FY-937**



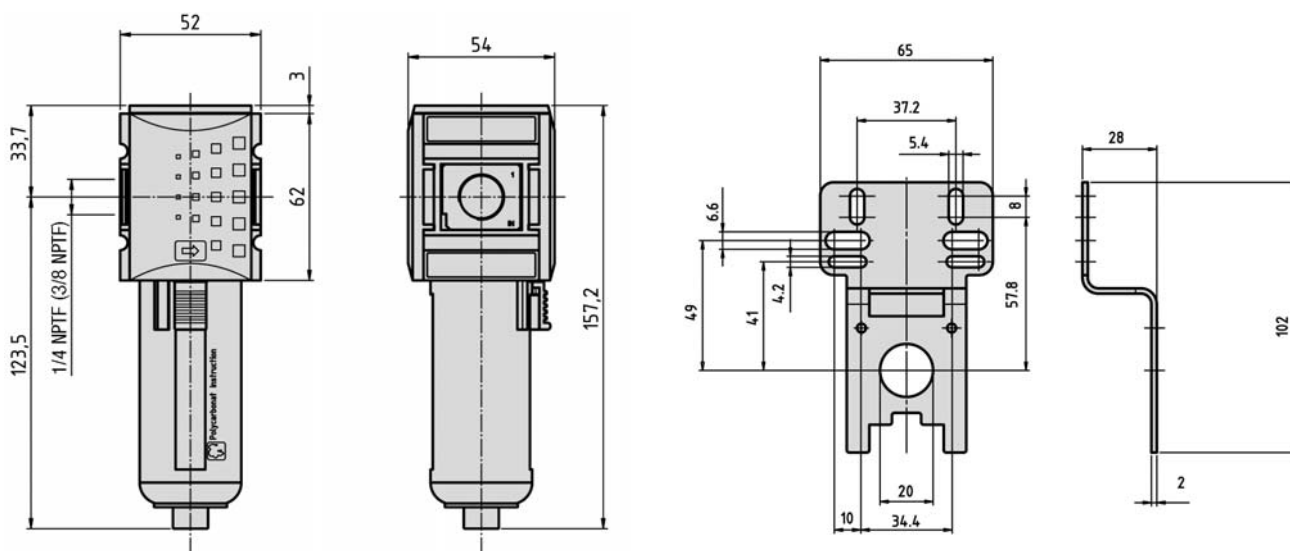
**Flow characteristic FY-938, FY-912**



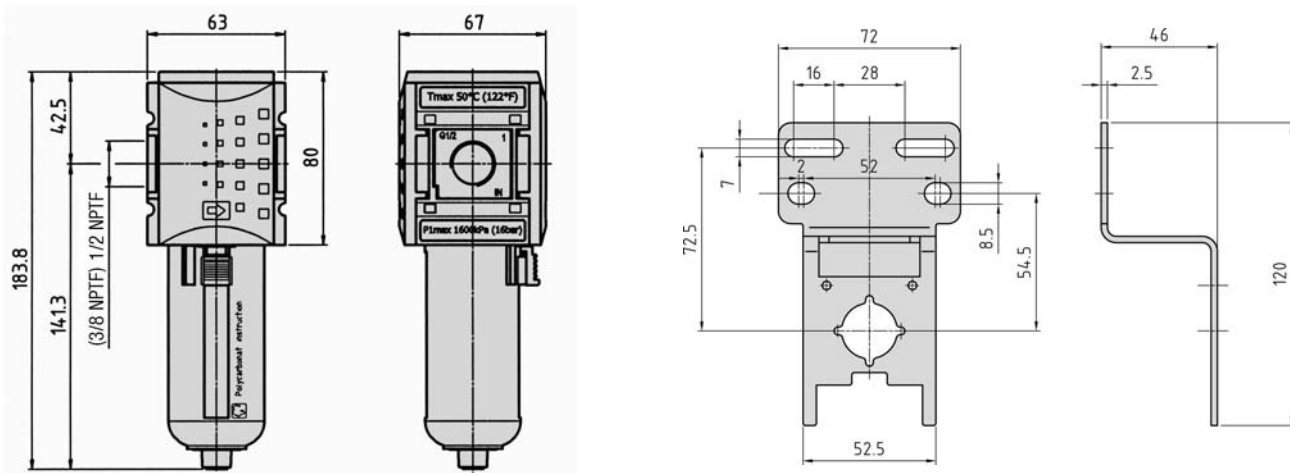
**Dimensions for series**

**FYA** – Active carbone filter

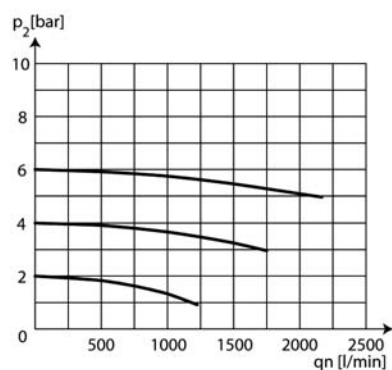
**FYA-914, FYA-937**



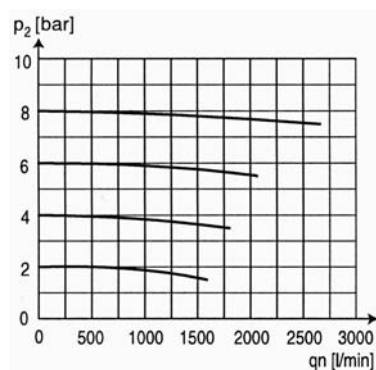
**FYA-938, FYA-912**



**Flow characteristic FYA-914, FYA-937**



**Flow characteristic FYA-938, FYA-912**



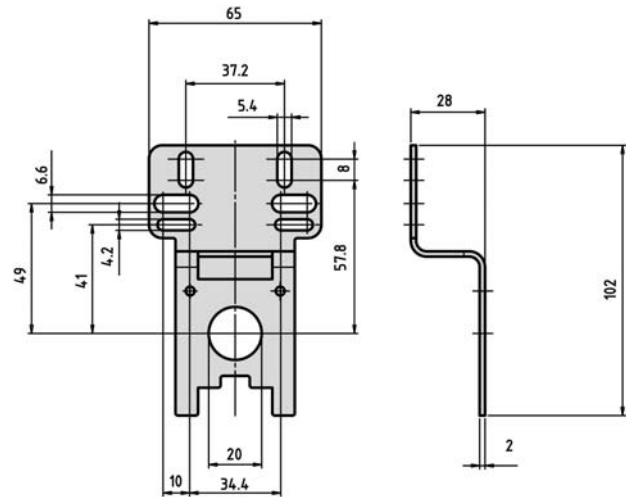
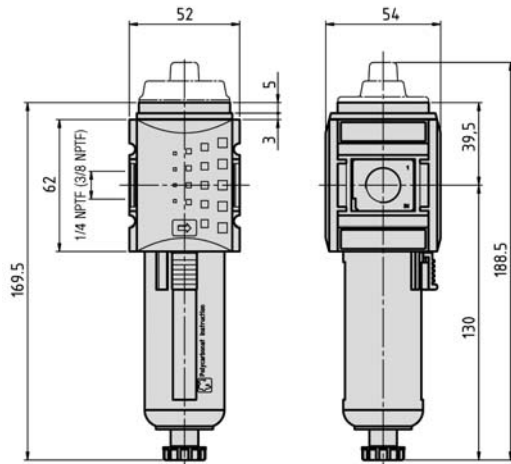


**Dimensions for series**

**FYF** – Fine filter (pre-filter)

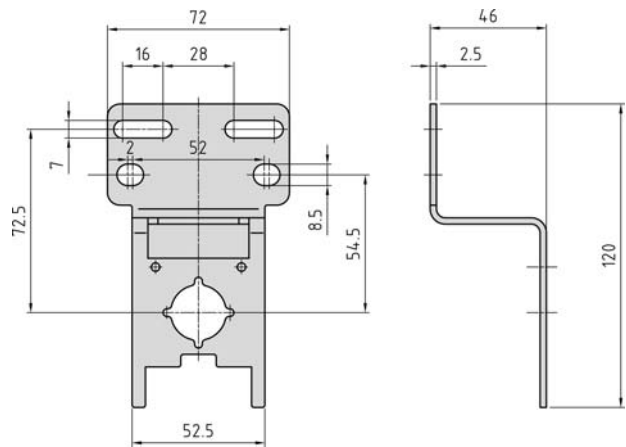
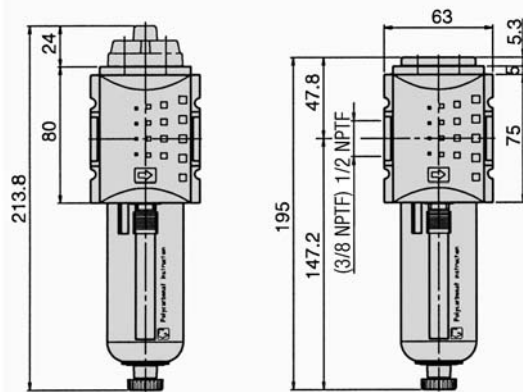
**FYF-914, FYF-937**

Fine filter with  
differential pressure  
display

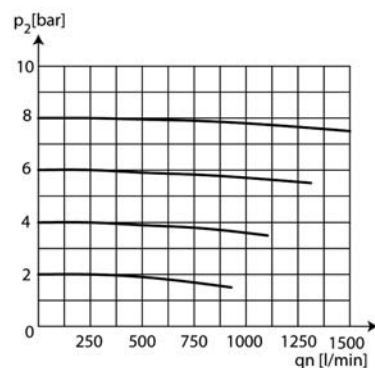


**FYF-938, FYF-912**

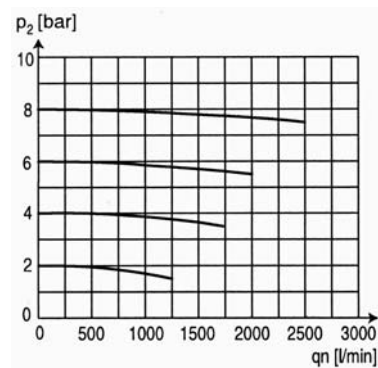
Fine filter  
without differential  
pressure display



**Flow characteristic FYF-914, FYF-937**



**Flow characteristic FYF-938, FYF-912**

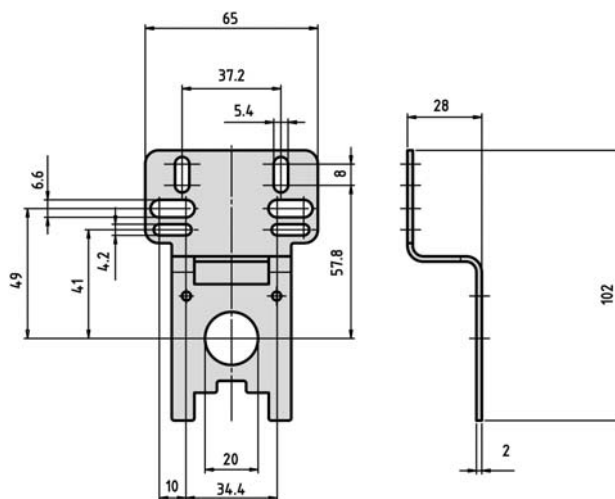
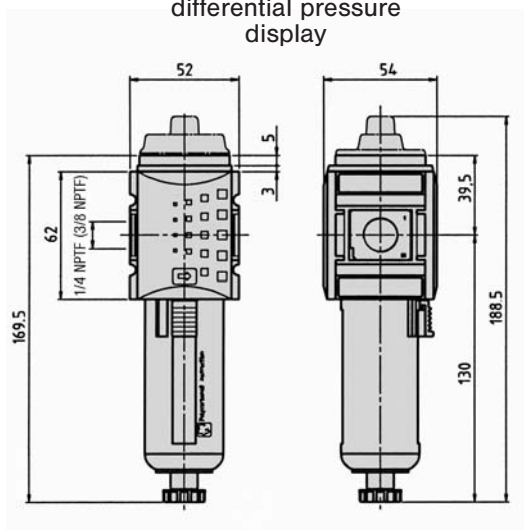


**Dimensions for series**

**FYM** – Micro filter

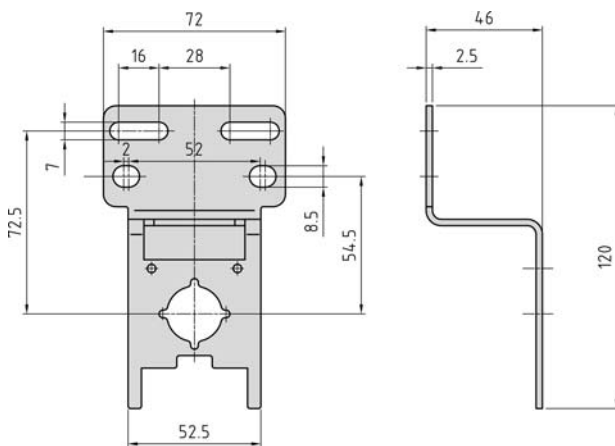
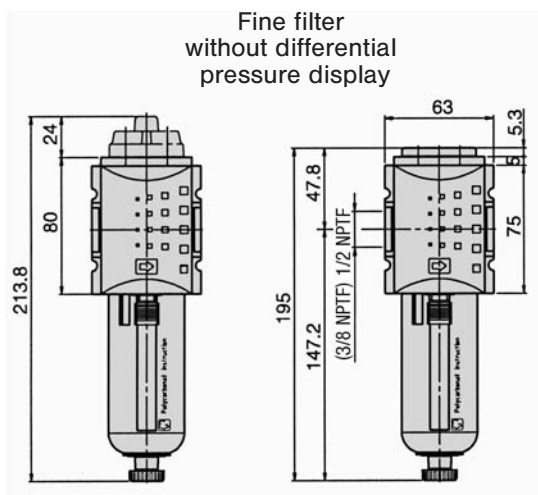
**FYM-914, FYM-937**

Fine filter with  
differential pressure  
display

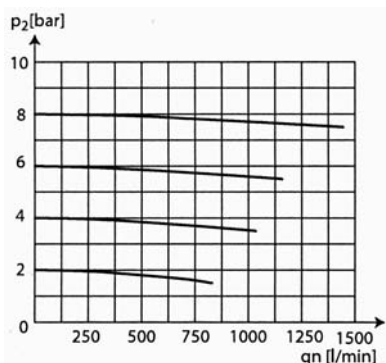


**FYM-938, FYM-912**

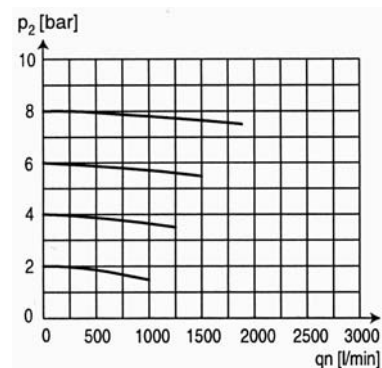
Fine filter  
without differential  
pressure display



**Flow characteristic FYM-914, FYM-937**



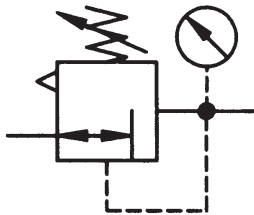
**Flow characteristic FYM-938, FYM-912**





**Technical data for series**

# R



**Order code**

RY-914-10-0-0021				
Series	Size	Pressure range	Options for digits No. 1, 2, 3	Options for digit No. 4
RY = standard	914 = 1/4 (Y1)	04 = 0.5 ... 4 bar (7.25 ... 58 psi)	000 = without gauge, flow from left to right	1 = standard
RYP = precision regulator	937 = 3/8 (Y1)	08 = 0.5 ... 8 bar (7.25 ... 116 psi)	001 = without gauge, flow from right to left	
	938 = 3/8 (Y2)	<b>10* = 0.5 ... 10 bar</b> (7.25 ... 145 psi)	<b>002* = with gauge, flow from left to right</b>	
	912 = 1/2 (Y2)		003 = with gauge, flow from right to left	

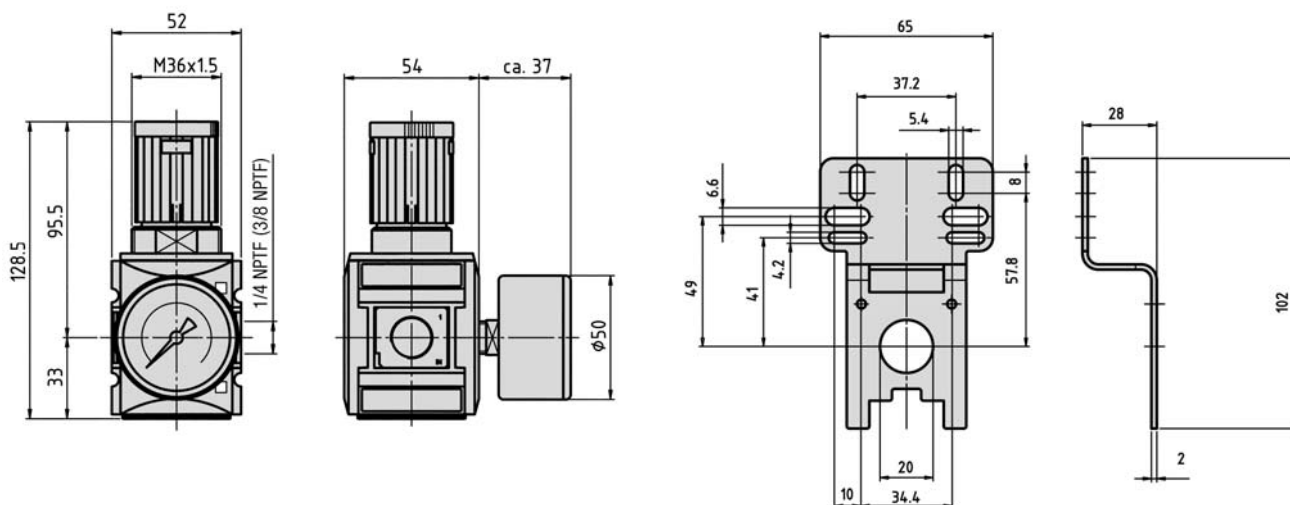
Order number Please complete according to order code.	RY-914-...	RY-937-...	RY-938-...	RY-912-...
Connection	1/4 NPTF	3/8 NPTF	3/8 NPTF	1/2 NPTF
Series	Y1		Y2	
Mounting	with bracket or in-line, horizontal or vertical			
Input range	max. 16 bar (max. 232 psi)			
Output range*	0.5 ... 10 bar (7.25 ... 145 psi)* (others see order code)			
Flow rate	2200 NI/min (2.236 Cv)	2700 NI/min (2.744 Cv)	4300 NI/min (4.37 Cv)	
Temperature range	– 10 °C ... + 50 °C (+ 14 °F ... + 122 °F)			
Materials	Housing: Grivory (PA66); Connection: die cast Zinc			
Medium	Compressed air, acc. to ISO 8573-1: 2001, dry air			
Weight without pressure gauge	0.292 kg (0.644 lb.)		0.8 kg (1.764 lbs.)	

\* = standard type

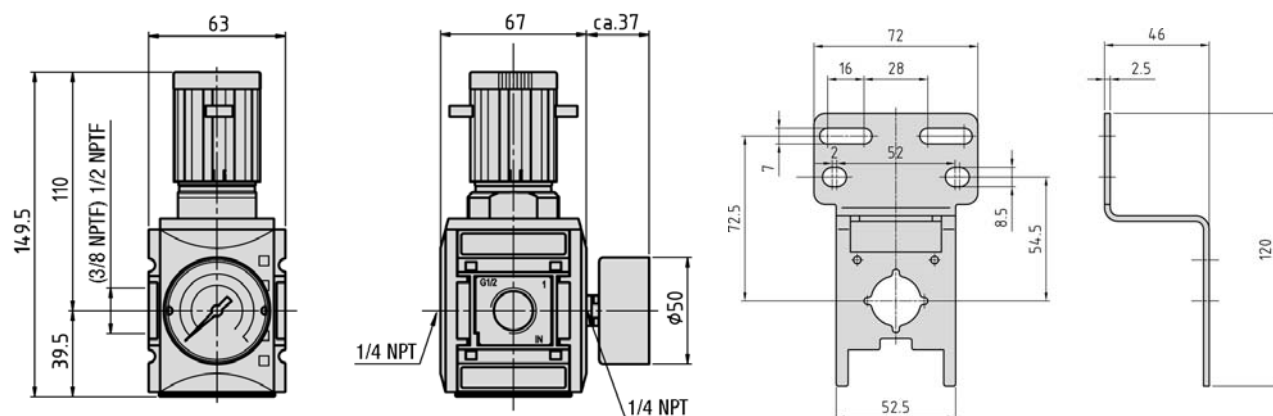
**Dimensions for series**

# RY

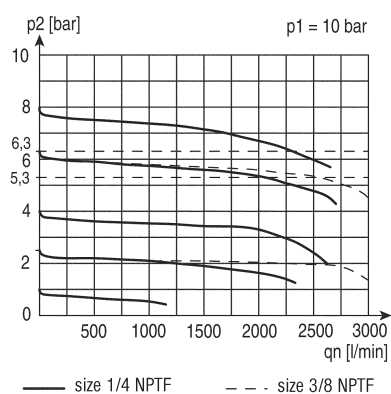
## RY-914, RY-937



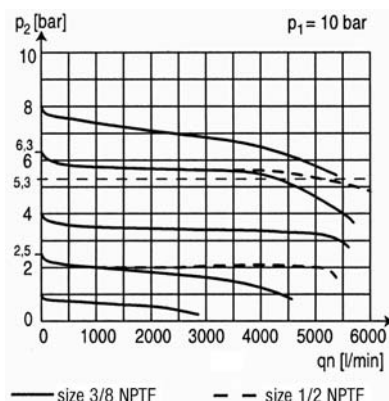
## RY-938, RY-912



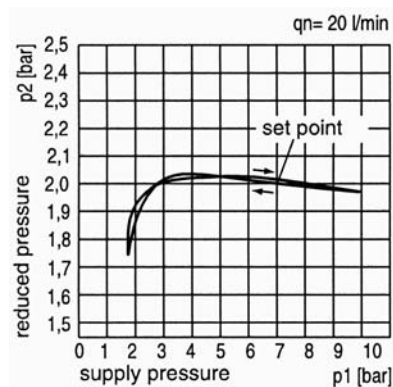
### Flow rate: RY-914, RY-937



### Flow rate: RY-938, RY-912



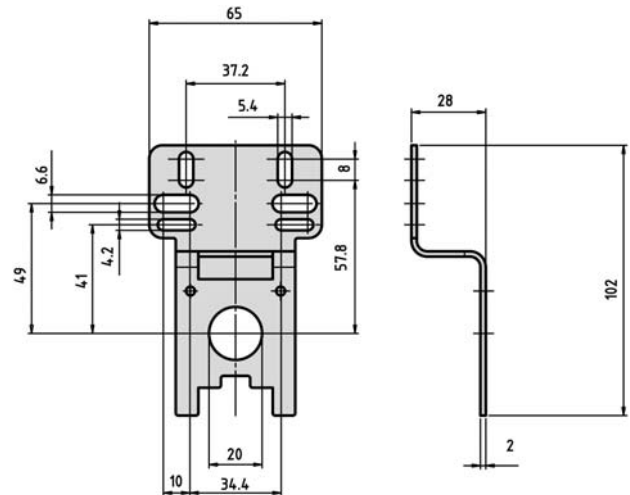
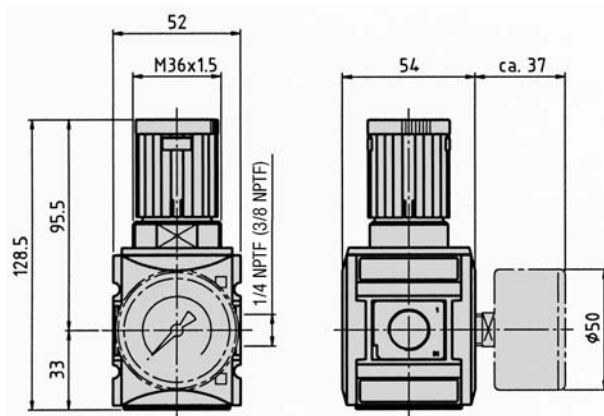
### Pressure characteristic



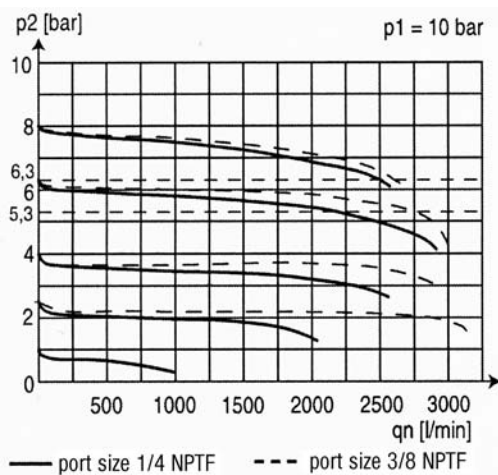
**Dimensions for series**

**RYP** – Precision regulator

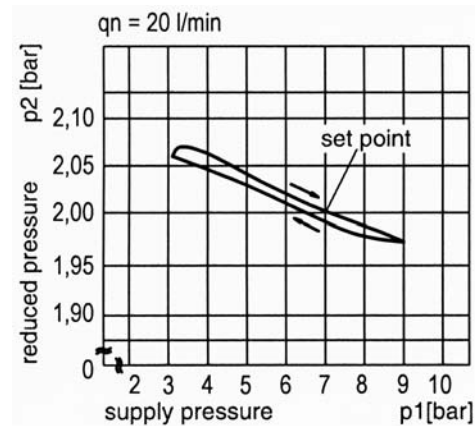
RYP-914, RYP-937



**Flow rate: RYP-914, RYP-937**



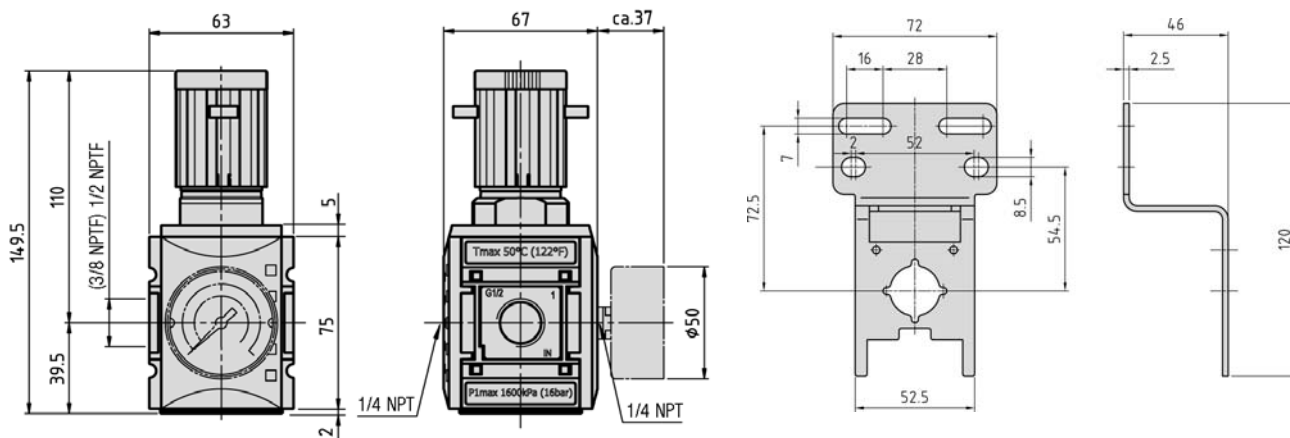
**Pressure characteristic**



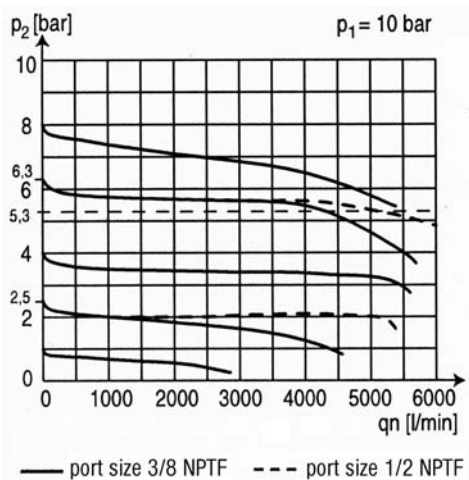
**Dimensions for series**

# **RYP – Precision regulator**

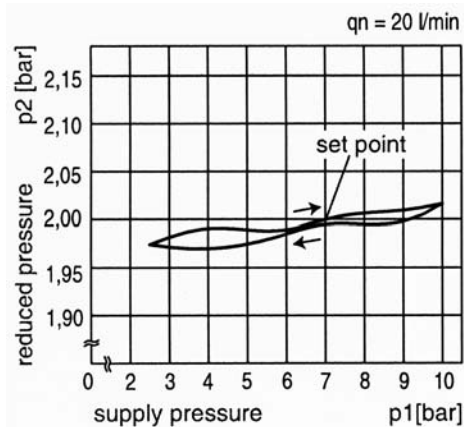
RYP-938, RYP-912



**Flow rate: RYP-938, RYP-912**

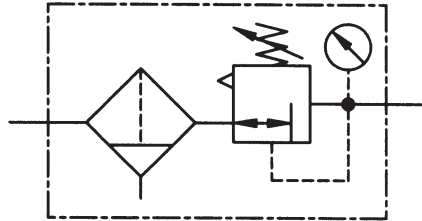


**Pressure characteristic**



**Technical data for series**

# FRY



**Order code**

FRY-914-10-5-1221				
<b>Series</b>				
<b>Size</b>				
914 = 1/4 (Y1)				
937 = 3/8 (Y1)				
938 = 3/8 (Y2)				
912 = 1/2 (Y2)				
<b>Pressure range</b>				
04 = 0.2 ... 4 bar (2.9 ... 58 psi)				
08 = 0.5 ... 8 bar (7.25 ... 116 psi)				
<b>10* = 0.5 ... 10 bar</b> (7.25 ... 145 psi)				
<b>Options for digit No. 1</b>				
1* = polycarbonate bowl with PA-guard				
3 = metal bowl with sight glass				
<b>Options for digit No. 3</b>				
0 = without gauge, flow from left to right				
1 = without gauge, flow from right to left				
<b>2* = with gauge, flow from left to right</b>				
3 = with gauge, flow from right to left				
<b>Options for digit No. 2</b>				
2* = semi-automatic drain				
3 = auto drain, opened without pressure				
4 = auto-drain, closed without pressure				
<b>Options for digit No. 4</b>				
1 = standard				

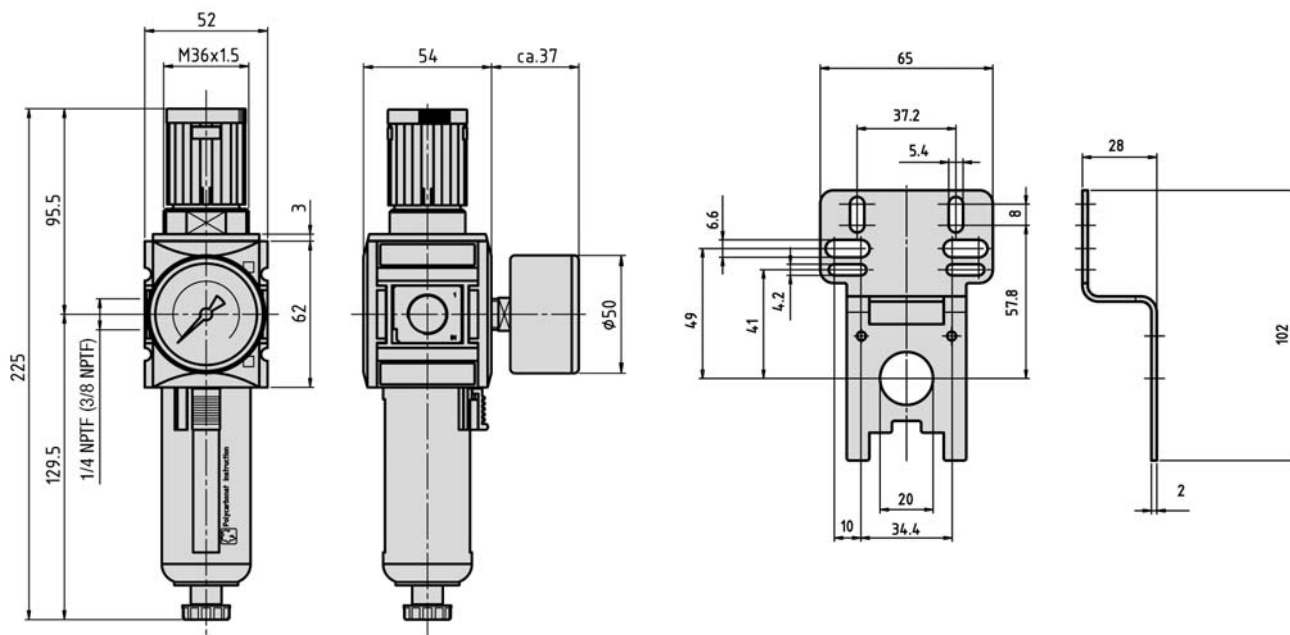
Order number Please complete according to order code.	FRY-914-...	FRY-937-...	FRY-938-...	FRY-912-...
Connection	1/4 NPTF	3/8 NPTF	3/8 NPTF	1/2 NPTF
Series	Y1		Y2	
Mounting	vertically, drain plug at bottom			
Input range	max. 16 bar (max. 232 psi) 1.5 ... 10 bar with auto drain		max. 16 bar (max. 232 psi) 1.5 ... 12 bar with auto drain	
Output range*	0.5 ... 10 bar (7.25 ... 145 psi)* (others see order code)			
Flow rate	2600 NI/min (2.642 Cv)		4300 NI/min (4.37 Cv)	5200 NI/min (5.285 Cv)
Filter element	5 µm			
Bowl volume	28 cm³		49 cm³	
Temperature range	50 °C (122 °F)			
Materials	Housing: Grivory (PA66); Connection: die cast Zinc			
Medium	Compressed air, acc. to ISO 8573-1: 2001, dry air			
Weight without pressure gauge*	0.360 kg (0.794 lb.) 0.530 kg lockable (1.168 lbs.)		0.850 kg (1.874 lb.) 1.050 kg lockable (2.315 lbs.)	

\* = standard type

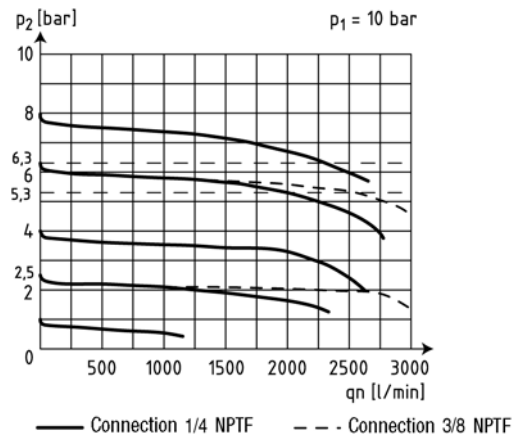
**Dimensions for series**

# FRY

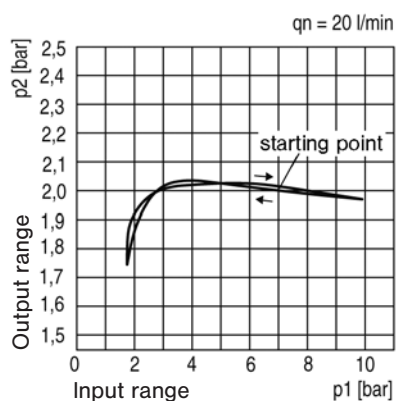
FRY-914, FRY-937



**Flow characteristic FRY-914, FRY-937**



**Pressure characteristic**

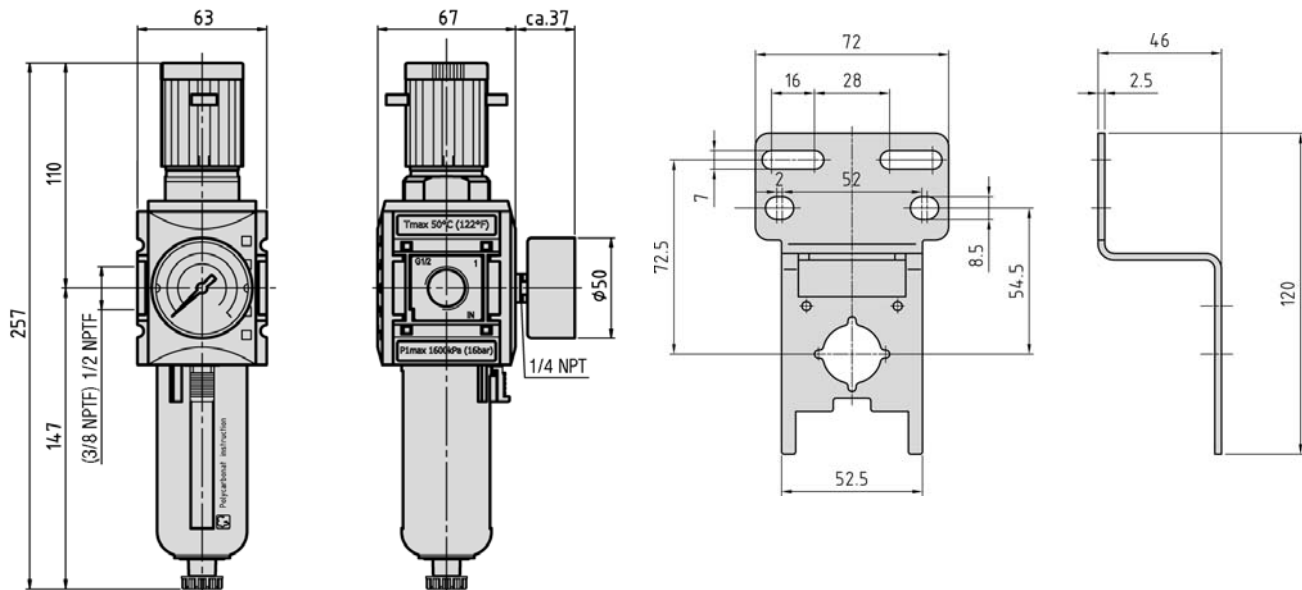




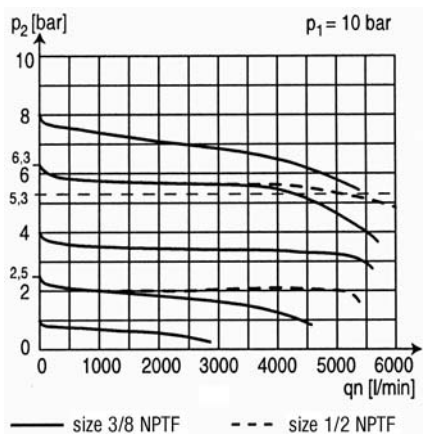
**Dimensions for series**

# FRY

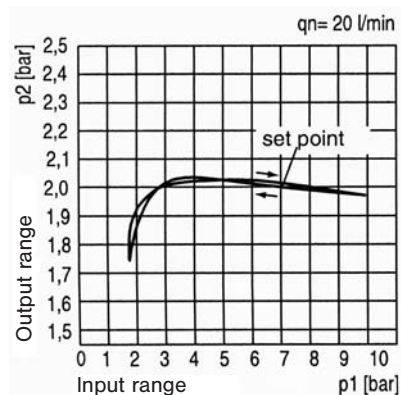
**FRY-938, FRY-912**



**Flow characteristic FRY-938, FRY-912**



**Pressure characteristic**



**Technical data for series**

**OY**



**Order code**

OY-914-00-0-1001			
<b>Series</b>	<b>Size</b>	<b>Pressure range</b>	<b>Options</b>
	914 = 1/4 (Y1)	00 = standard	1001* = Grivory (PA66) bowl with PA-guard
	937 = 3/8 (Y1)		3001 = metal bowl with sight glass
	938 = 3/8 (Y2)		
	912 = 1/2 (Y2)		

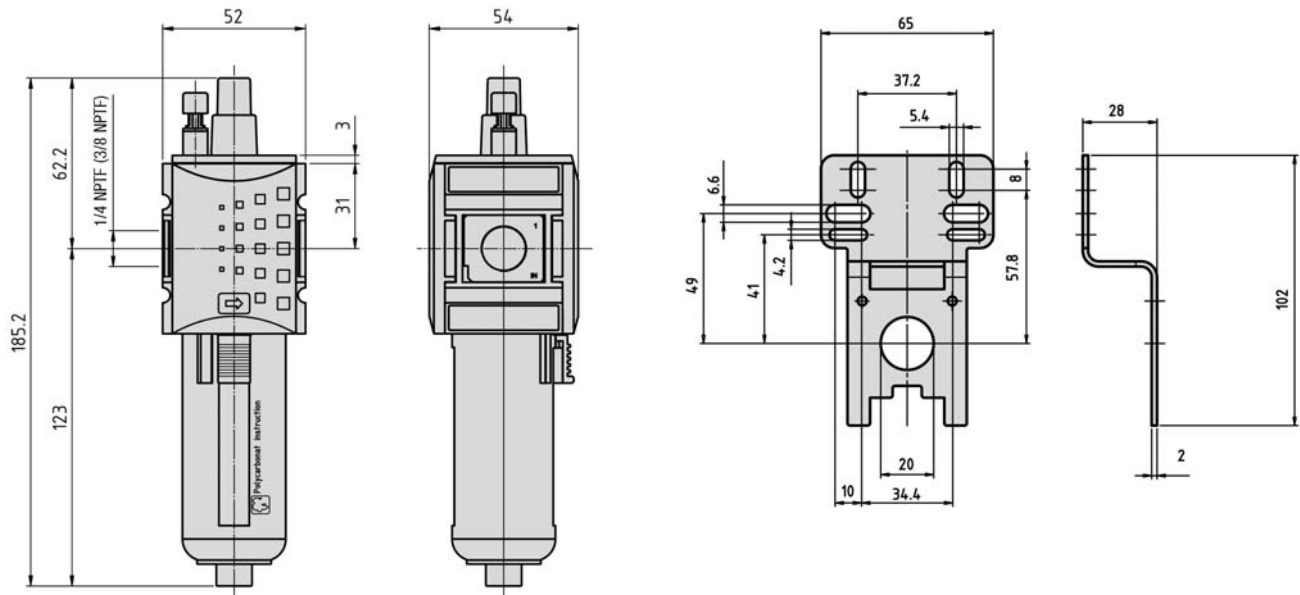
Order number Please complete according to order code.	OY-914-00-0-...	OY-937-00-0-...	OY-938-00-0-...	OY-912-00-0-...
Connection	1/4 NPTF	3/8 NPTF	3/8 NPTF	1/2 NPTF
Series	Y1		Y2	
Mounting	vertically			
Input range	max. 16 bar, max. 20 bar with metal bowl (max. 232 psi, max. 290 psi)			
Flow rate*	2800 NI/min (2.845 Cv)	3100 NI/min (3.15 Cv)	8000 NI/min (8.13 Cv)	
Bowl volume	40 cm³			80 cm³
Type of oil	HL 25 according to DIN 51524 – ISO VG 32			
Temperature range	0 °C ... + 60 °C (+ 32 °F ... + 140 °F)			
Materials	Housing: Grivory (PA66); Connection: die cast Zinc			
Weight*	0.230 kg (0.507 lb.)			0.690 kg (1.521 lbs.)

\* = standard type

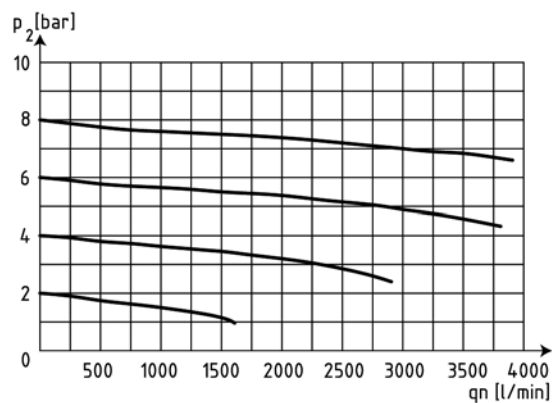
**Dimensions for series**

**OY**

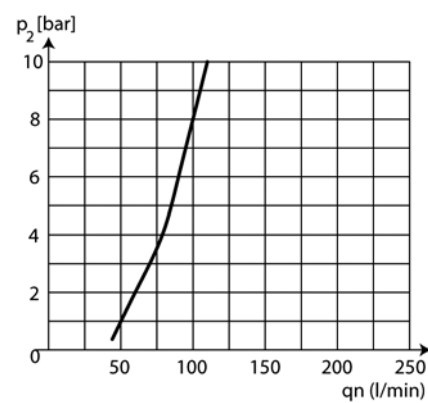
OY-914, OY-937



**Flow characteristic OY-914, OY-937**



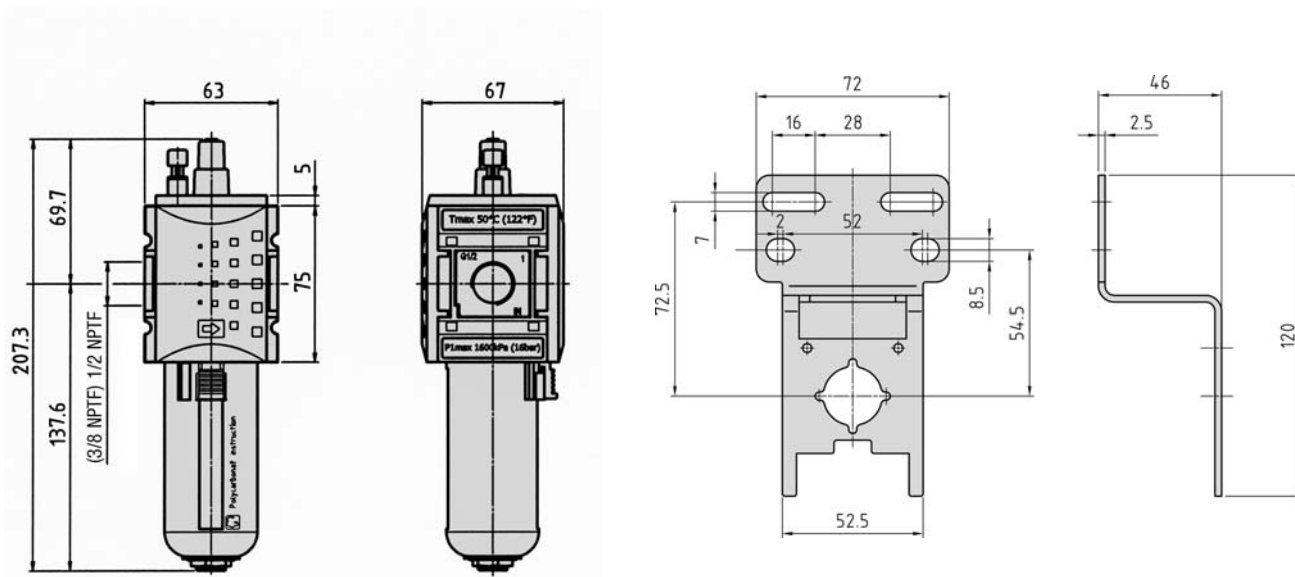
**Lubricator: response pressure**



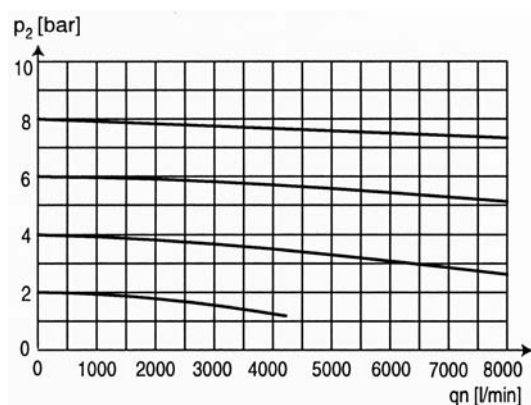
**Dimensions for series**

**OY**

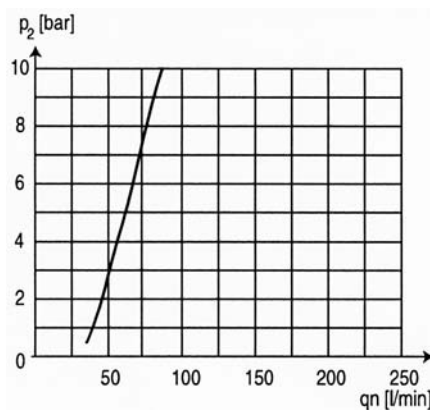
OY-938, OY-912



**Flow characteristic OY-938, OY-912**



**Lubricator: response pressure**



**Technical data for series**

# FROY



**Order code**

FROY-914-10-5-1221				
<b>Series</b>				
<b>Size</b>	<b>Pressure range</b>	<b>Options for digit No. 1</b>	<b>Options for digit No. 2</b>	
914 = 1/4 (Y1)	04 = 0.2 ... 4 bar (2.9 ... 58 psi)	1* = Grivory (PA66) bowl with PA-guard	2* = semi-automatic drain	
937 = 3/8 (Y1)	08 = 0.5 ... 8 bar (7.25 ... 116 psi)	3 = metal bowl with sight glass	3 = auto drain, NO	
938 = 3/8 (Y2)			4 = auto-drain, NC	
912 = 1/2 (Y2)	10* = 0.5 ... 10 bar (7.25 ... 145 psi)	<b>Options for digit No. 3</b>	<b>Options for digit No. 4</b>	
		0 = without gauge, flow from left to right	1 = standard	
		1 = without gauge, flow from right to left		
		2* = with gauge, flow from left to right		
		3 = with gauge, flow from right to left		

Order number Please complete according to order code.	FROY-914-...	FROY-937-...	FROY-938-...	FROY-912-...
Connection	1/4 NPTF	3/8 NPTF	3/8 NPTF	1/2 NPTF
Series	Y1		Y2	
Mounting	vertically, drain plug at bottom			
Input range	max. 16 bar (max. 232 psi) 1.5 ... 10 bar with auto drain		max. 16 bar (max. 232 psi) 1.5 ... 12 bar with auto drain	
Output range*	0.5 ... 10 bar (7.25 ... 145 psi)* (others see order code)			
Flow rate	2000 NI/min (2.032 Cv)	2600 NI/min (2.642 Cv)	4300 NI/min (4.37 Cv)	5200 NI/min (5.285 Cv)
Filter element	5 µm			
Bowl volume	Filter regulator: 28 cm³ Lubricator: 40 cm³		Filter regulator: 49 cm³ Lubricator: 80 cm³	
Temperature range	50 °C (122 °F)			
Materials	Housing: Grivory (PA66); Connection: die cast Zinc			
Medium	Compressed air, acc. to ISO 8573-1: 2001, dry air			
Weight without pressure gauge*	0.633 kg (1.395 lbs.) 0.530 kg lockable (1.168 lbs.)		1.010 kg (2.227 lbs.) 1.050 kg lockable (2.315 lbs.)	

\* = standard type

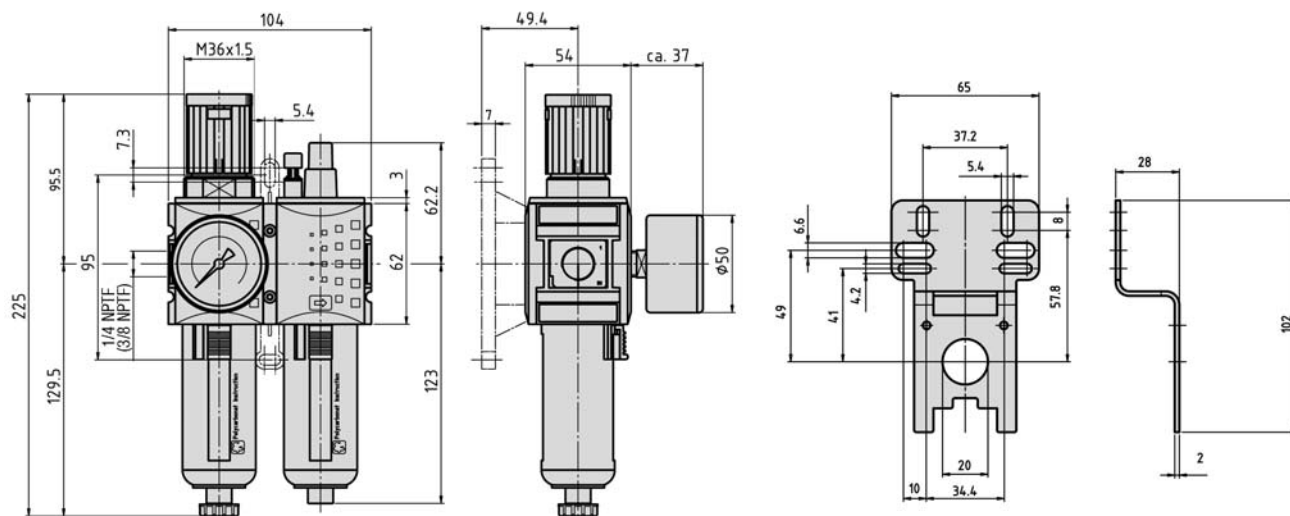
**Series Y**  
**Filter, Regulator, Lubricator combination**  
**1/4 NPTF – 3/8 NPTF**



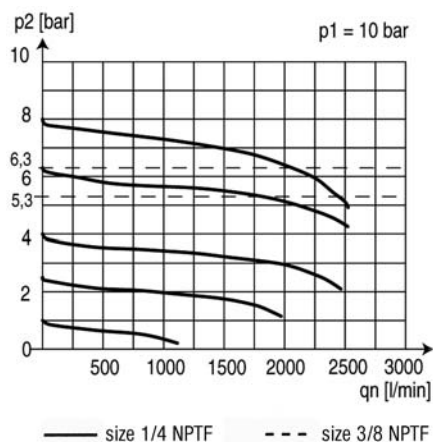
**Dimensions for series**

# FROY

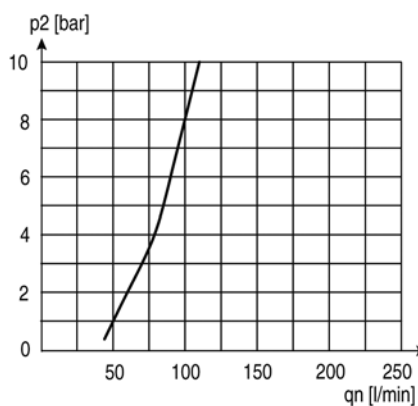
FROY-914, FROY-937



**Flow characteristic FROY-914, FROY-937**



**Lubricator: response pressure**

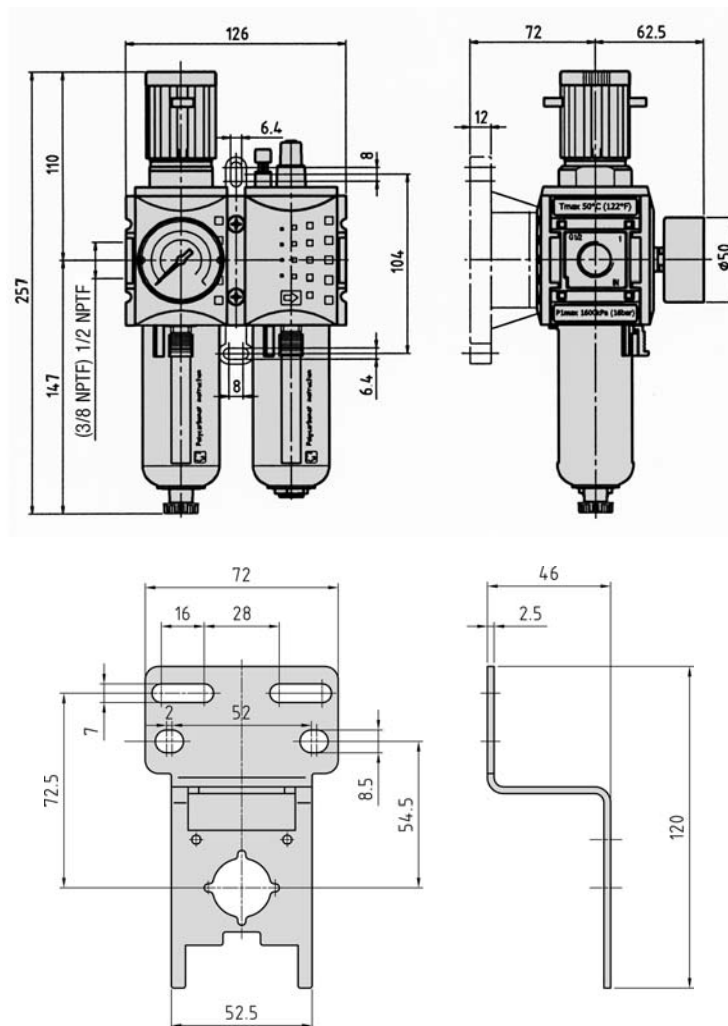




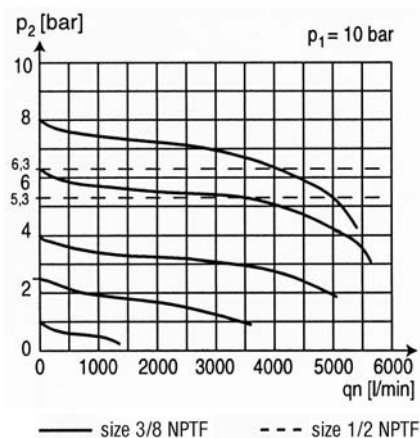
**Dimensions for series**

# FROY

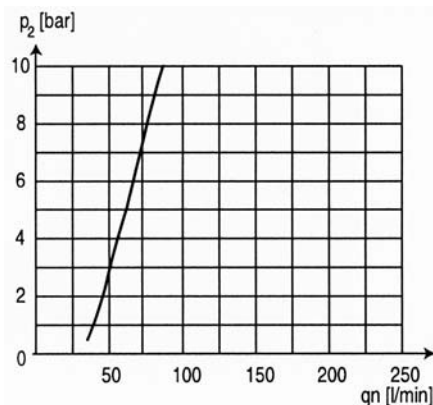
**FROY-938, FROY-912**



**Flow characteristic FROY-938, FROY-912**



**Lubricator: response pressure**

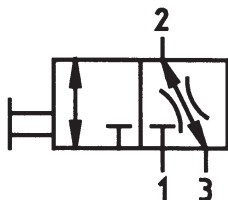


**Series Y**  
**Lockable ball valve**  
**1/4 NPTF – 1/2 NPTF**

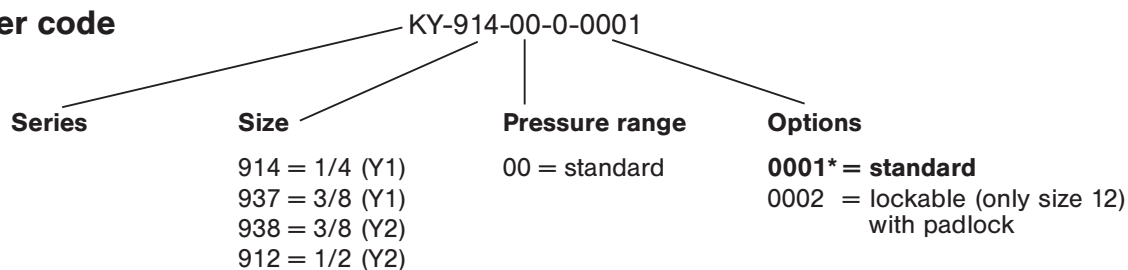


**Technical data for series**

**KY**



**Order code**



**Design and function**

3/2-way ball valve for the shut-off of downstream air.

Easy block assembly for components to be connected in series.

The components of series Y can easily be connected by using the coupling kit KPY.

<b>Order number</b> Please complete according to order code.	<b>KY-914-00-0-...</b>	<b>KY-937-00-0-...</b>	<b>KY-938-00-0-...</b>	<b>KY-912-00-0-...</b>
<b>Connection</b>	1/4 NPTF	3/8 NPTF	3/8 NPTF	1/2 NPTF
<b>Series</b>	Y1		Y2	
<b>Mounting</b>	with bracket or in-line, horizontal or vertical			
<b>Input range</b>	max. 16 bar (max. 232 psi)			
<b>Flow rate</b>	2000 NI/min (2.032 Cv)		4300 NI/min (4.37 Cv)	5200 NI/min (5.285 Cv)
<b>Temperature range</b>	0 °C ... + 60 °C (+ 32 °F ... + 140 °F)			
<b>Materials</b>	Housing: Grivory (PA66); Connection: die cast Zinc			
<b>Weight*</b>	0.200 kg (0.441 lb.)		0.820 kg (1.808 lbs.)	

\* = standard type

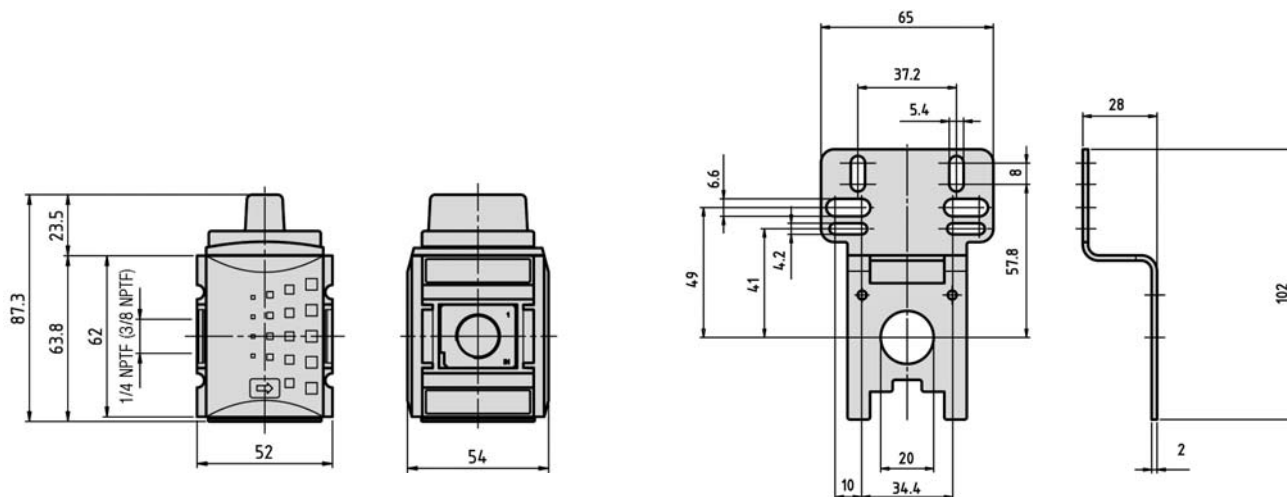
**Series Y**  
**Lockable ball valve**  
**1/4 NPTF – 1/2 NPTF**



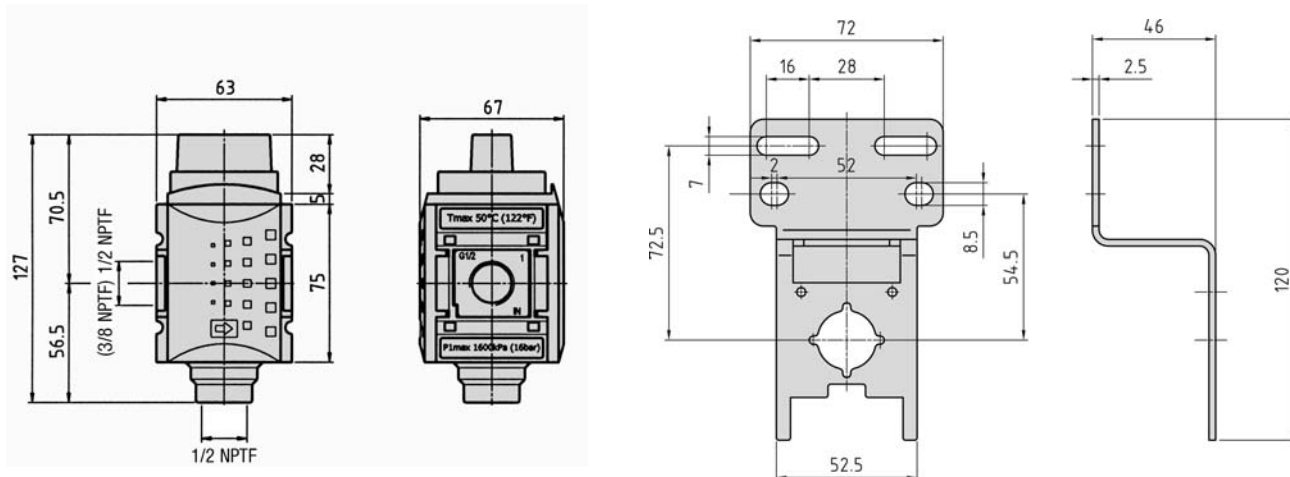
**Dimensions for series**

**KY**

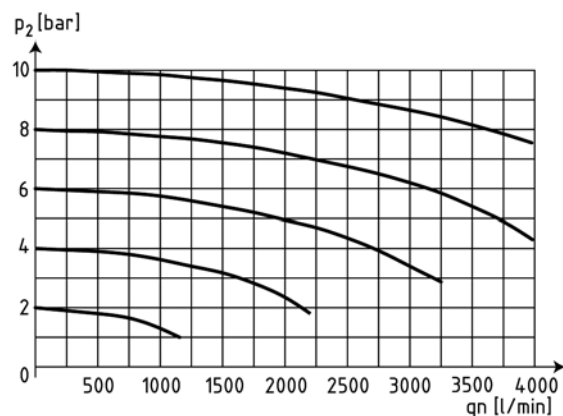
**KY-914, KY-937**



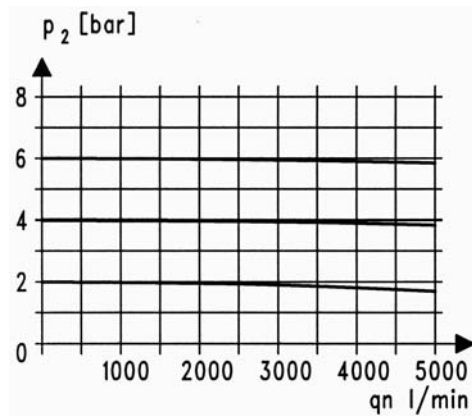
**KY-938, KY-912**



**Flow characteristic KY-914, KY-937**



**Flow characteristic KY-938, KY-912**

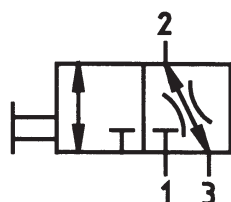


**Series Y**  
**Non-return valve**  
**1/4 NPTF – 1/2 NPTF**

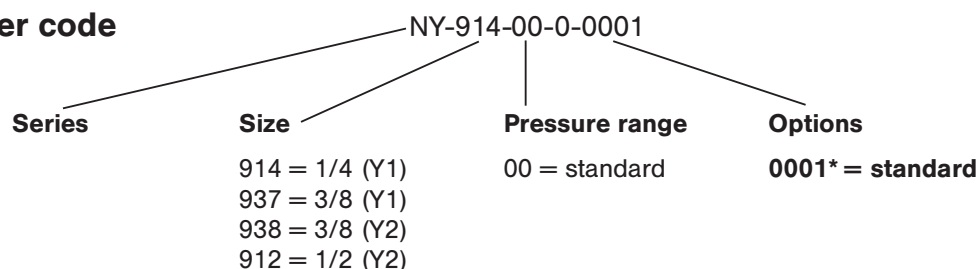


**Technical data for series**

**NY**



**Order code**



Order number Please complete according to order code.	NY-914-00-0-...	NY-937-00-0-...	NY-938-00-0-...	NY-912-00-0-...
Connection	1/4 NPTF	3/8 NPTF	3/8 NPTF	1/2 NPTF
Series	Y1		Y2	
Mounting	with bracket or in-line, horizontal or vertical			
Input range	max. 16 bar (max. 232 psi)			
Flow rate	1250 NI/min (1.27 Cv)		5000 NI/min (5.08 Cv)	
Temperature range	0 °C ... + 60 °C (+ 32 °F ... + 140 °F)			
Materials	Housing: Grivory (PA66); Connection: die cast Zinc			
Weight*	0.250 kg (0.551 lb.)			

\* = standard type

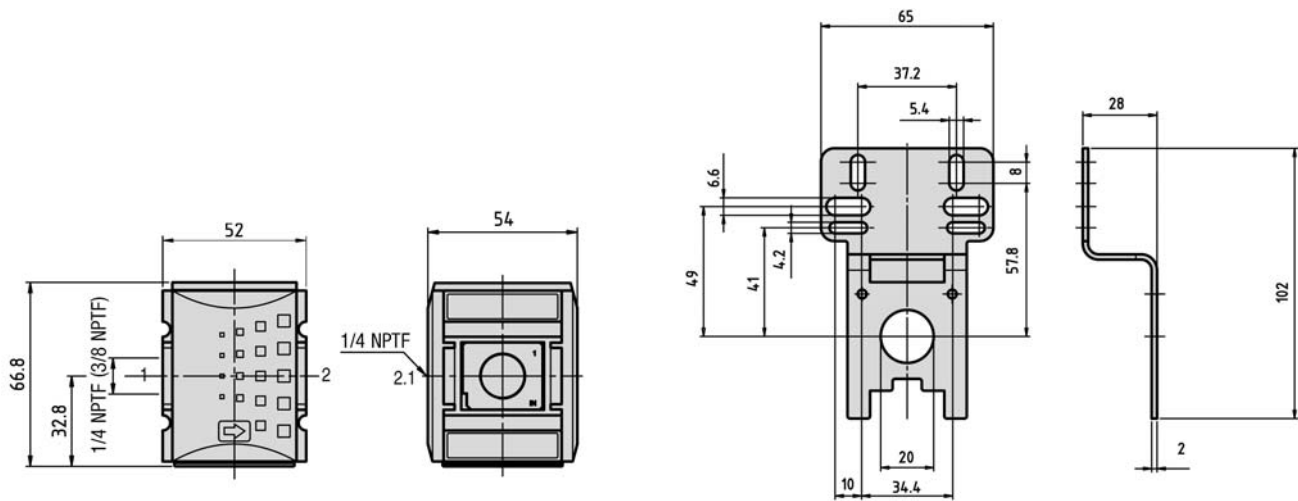
**Series Y**  
**Non-return valve**  
**1/4 NPTF – 1/2 NPTF**



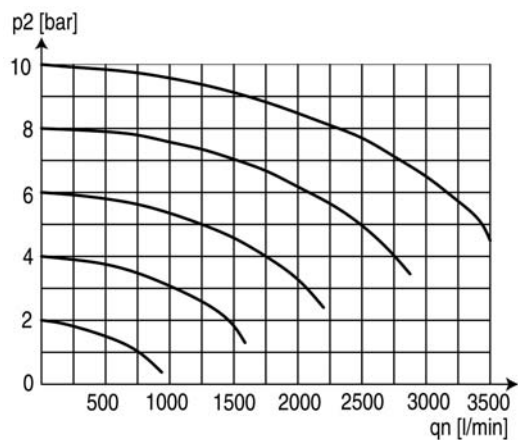
**Dimensions for series**

**NY**

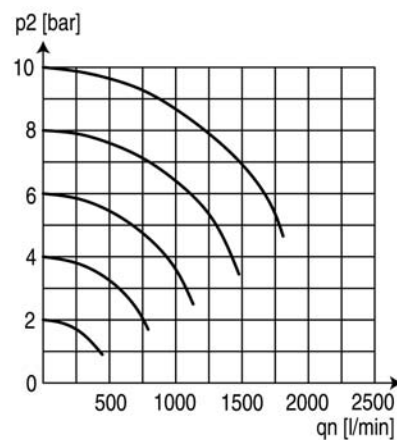
**NY-914, NY-937**



**Flow characteristic NY-914, NY-937**  
**nominal flow from 1 → 2**



**Flow characteristic NY-914, NY-937**  
**nominal flow from 1 → 2.1**



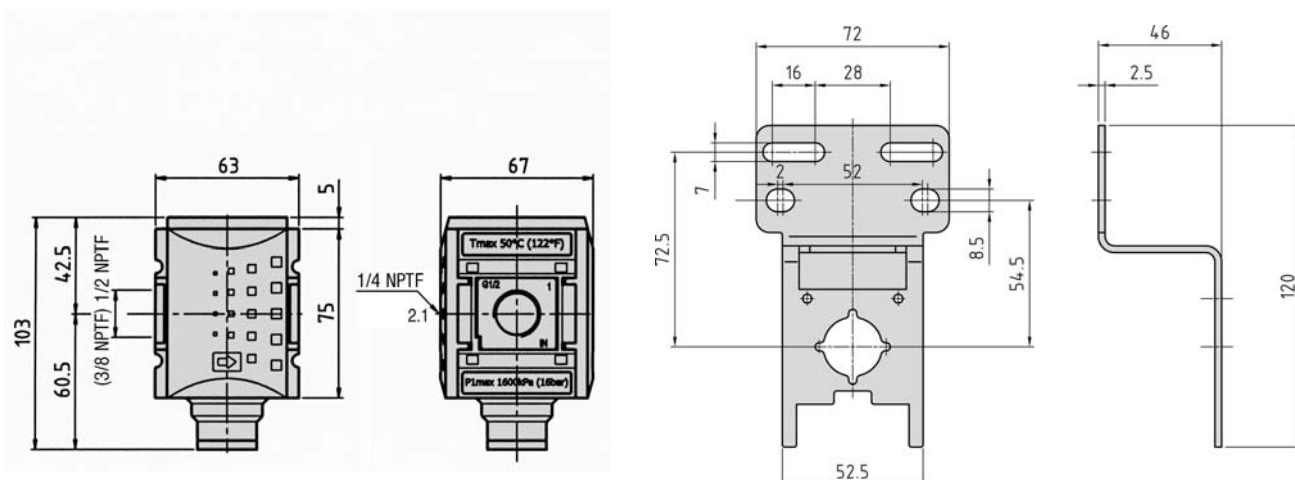
**Series Y**  
**Non-return valve**  
**1/4 NPTF – 1/2 NPTF**



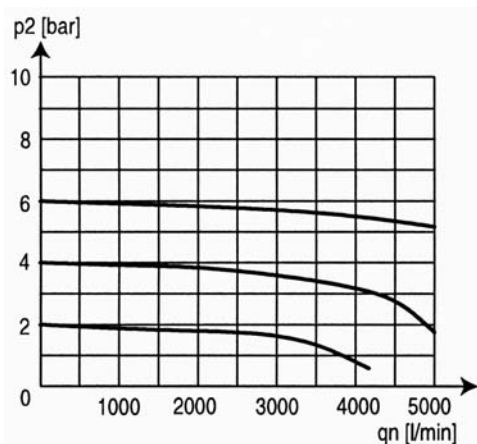
**Dimensions for series**

**NY**

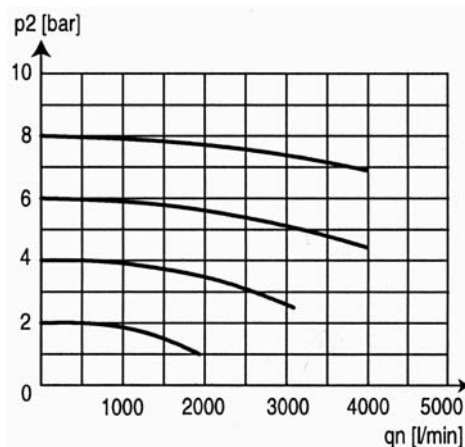
NY-938, NY-912



**Flow characteristic NY-938, NY-912**  
**nominal flow from 1 → 2**



**Flow characteristic NY-938, NY-912**  
**nominal flow from 1 → 2.1**



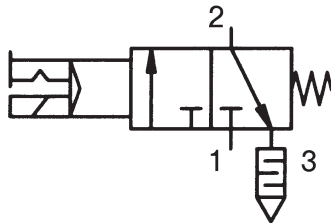


**Series Y**  
**3/2-way inline valve**  
**1/4 NPTF, 1/2 NPTF**

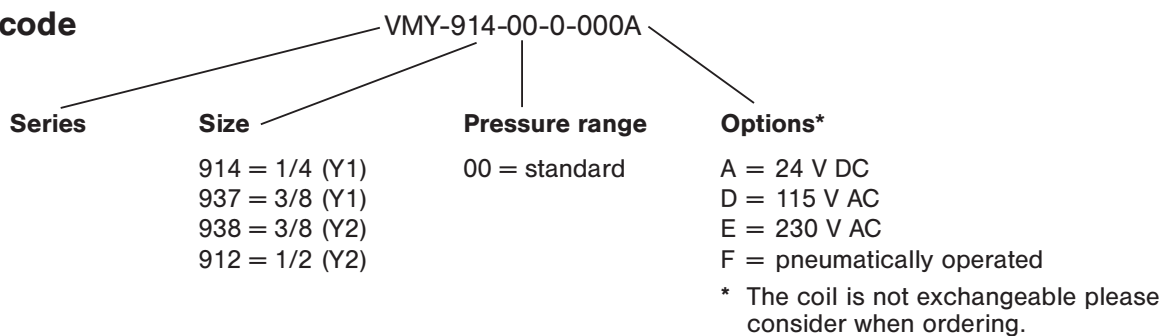


**Technical data for series**

# VMY



**Order code**



**Design and function**

Solenoid or pneumatically operated 3/2-way poppet valve with spring return. The solenoid and plug socket are supplied with the unit.

Easy block assembly for components to be connected in series.

The components of series Y can be easily connected by using the coupling kit KPY.

Order number Please complete according to order code.	VMY-914-00-0-...	VMY-937-00-0-...	VMY-938-00-0-...	VMY-912-00-0-...
Connection	1/4 NPTF	3/8 NPTF	3/8 NPTF	1/2 NPTF
Series	Y1		Y2	
Mounting	with bracket or in-line, horizontal or vertical			
Pressure range	2 ... 10 bar (29 ... 145 psi)			
Duty cycle	100 %			
Degree of protection	IP 65 according to EN 60529			
Flow rate	1800 NI/min (1.829 Cv)	2000 NI/min (2.032 Cv)	4300 NI/min (4.37 Cv)	5200 NI/min (5.285 Cv)
Temperature range	0 °C ... + 50 °C (+ 32 °F ... + 122 °F)			
Materials	Housing: Grivory (PA66); Connection: die cast Zinc			
Weight	0.196 kg (0.432 lb.)		1.050 kg (2.315 lbs.)	

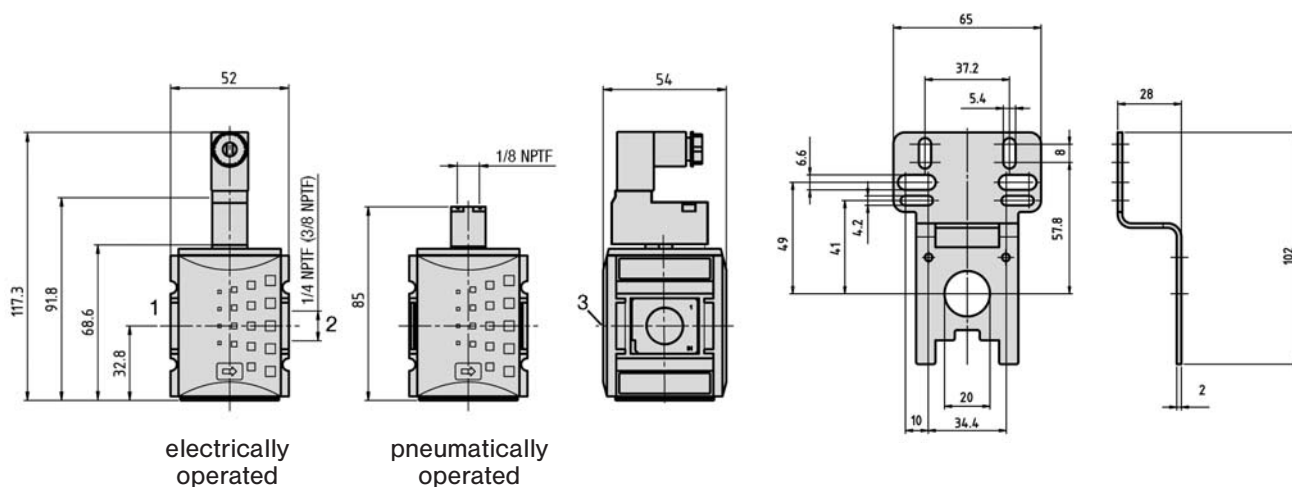
**Series Y**  
**3/2-way inline valve**  
**1/4 NPTF, 3/8 NPTF**



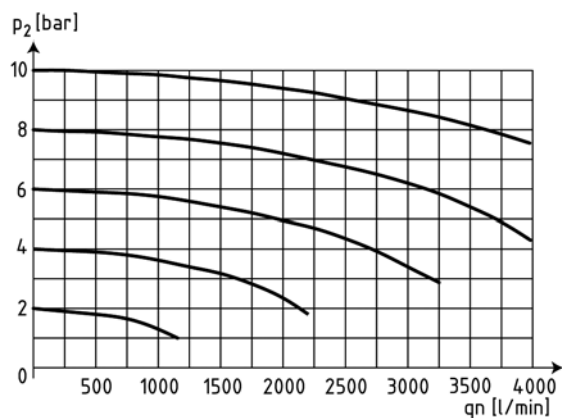
**Dimensions for series**

**VMY**

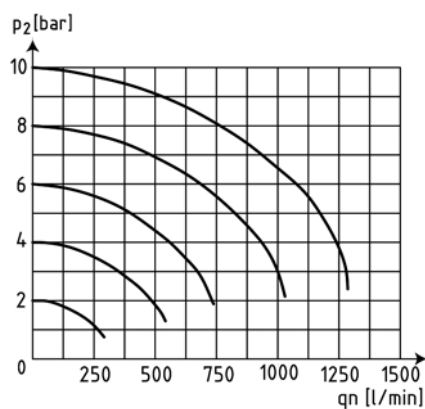
VMY-914, VMY-937



**Flow characteristic VMY-914, VMY-937**



**Rear exhaust flow characteristic**



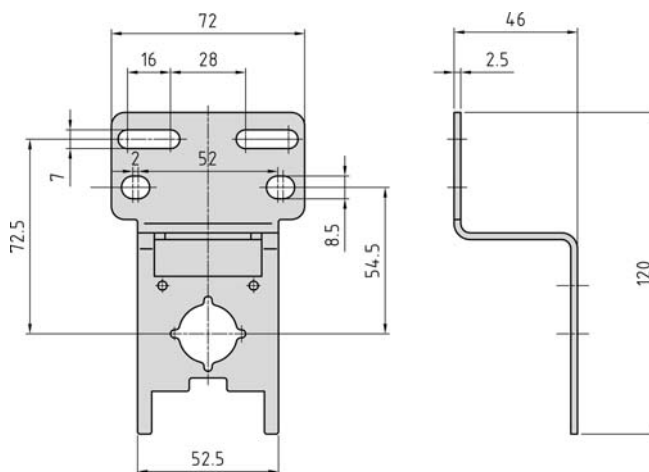
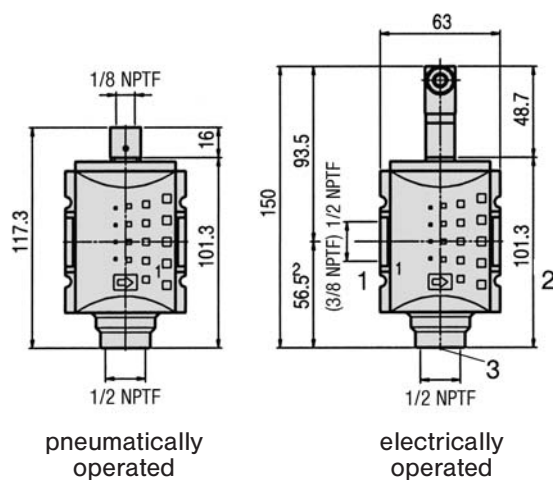
**Series Y**  
**3/2-way inline valve**  
**3/8 NPTF, 1/2 NPTF**



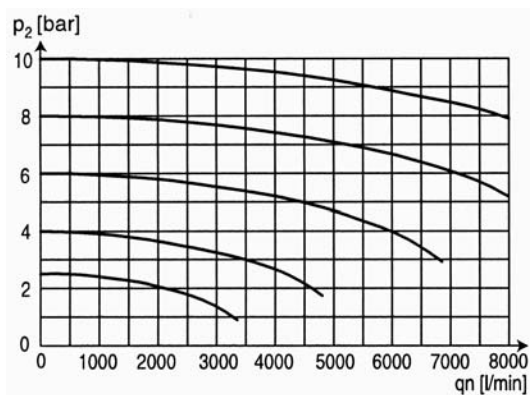
**Dimensions for series**

# VMY

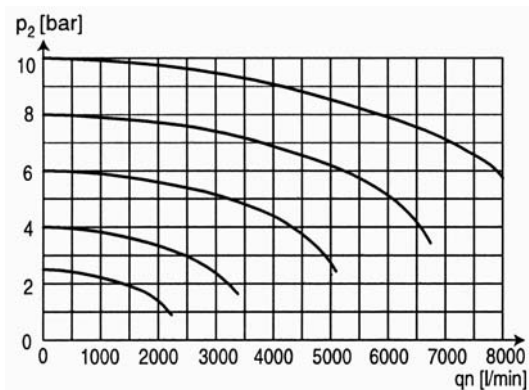
VMY-938, VMY-912



**Flow characteristic VMY-938, VMY-912**

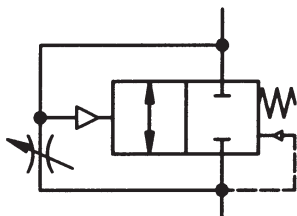


**Rear exhaust flow characteristic**

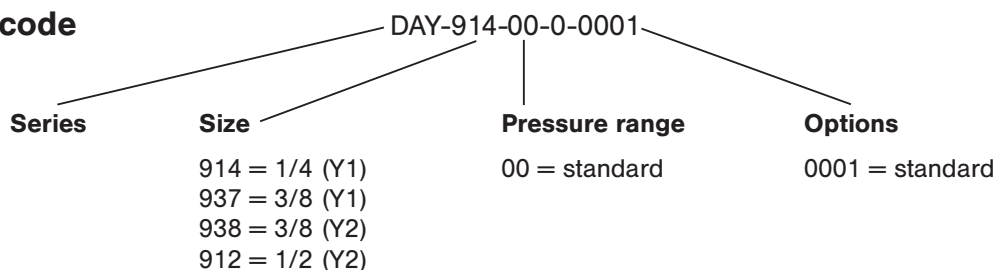


**Technical data for series**

# DAY



**Order code**



**Design and function**

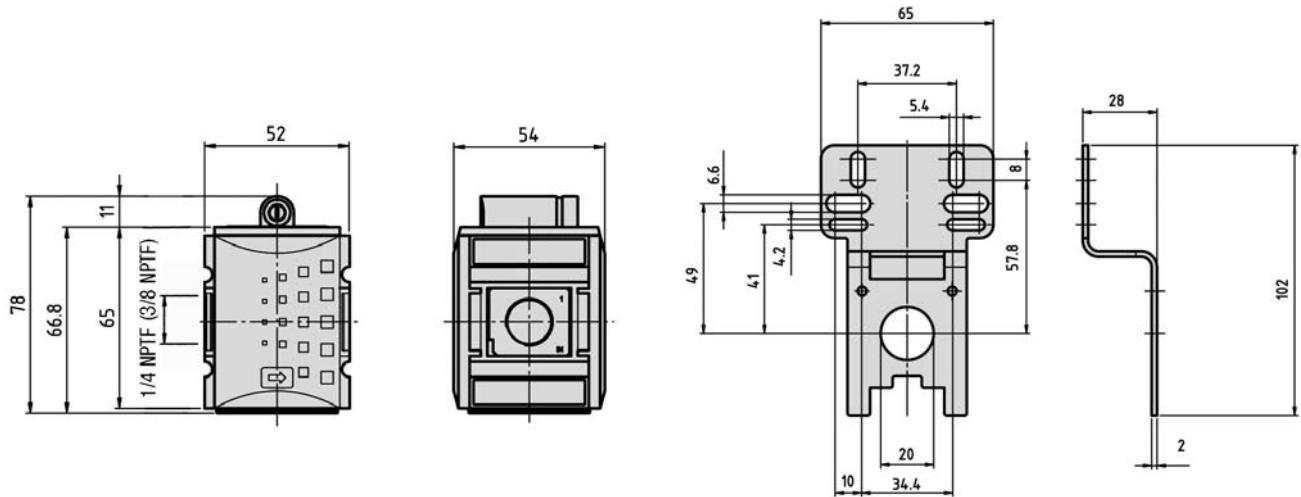
Soft start valve with adjustable filling time. This valve can be used to slowly increase the system pressure through an adjustable throttle. When 50 % of the incoming pressure is achieved the valve opens completely. The components of series Y can be easily connected by using the coupling kit KPY.

Order number	DAY-914-00-0-0001	DAY-937-00-0-0001	DAY-938-00-0-0001	DAY-912-00-0-0001
Connection	1/4 NPTF	3/8 NPTF	3/8 NPTF	1/2 NPTF
Series	Y1		Y2	
Mounting	with bracket or in-line, horizontal or vertical			
Pressure range	2 ... 16 bar (29 ... 232 psi)			
Flow rate	1800 NI/min (1.829 Cv)	2000 NI/min (2.032 Cv)	4300 NI/min (4.37 Cv)	5200 NI/min (5.285 Cv)
Temperature range	0 °C ... + 50 °C (+ 32 °F ... + 122 °F)			
Materials	Housing: Grivory (PA66); Connection: die cast Zinc			
Weight	0.180 kg (0.397 lb.)		0.770 kg (1.697 lbs.)	

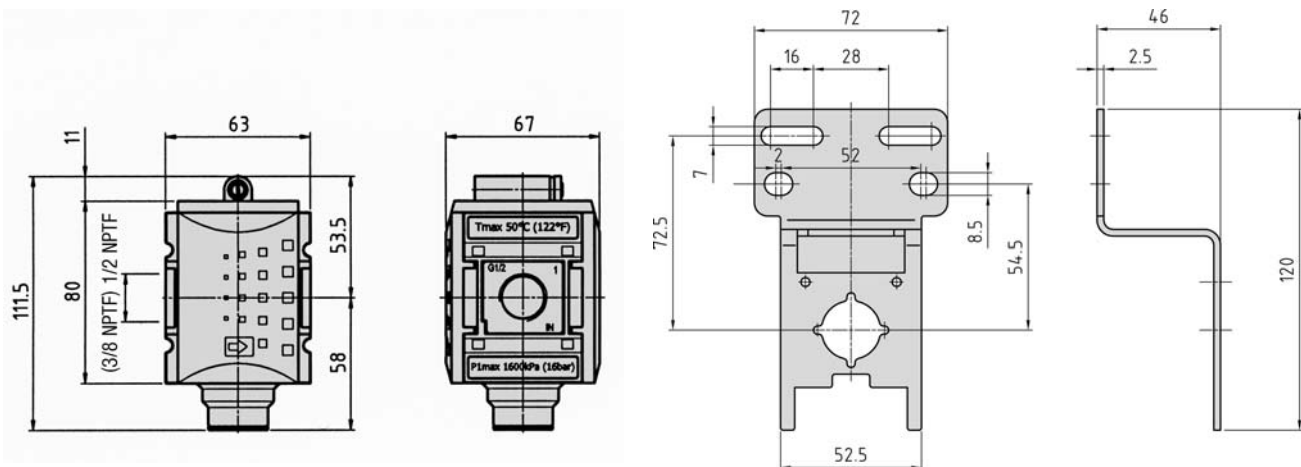
**Dimensions for series**

# DAY

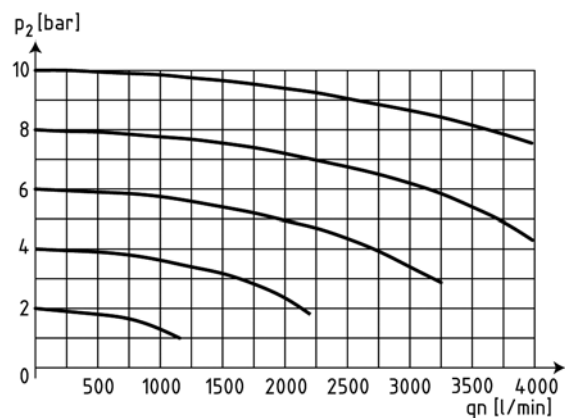
**DAY-914, DAY-937**



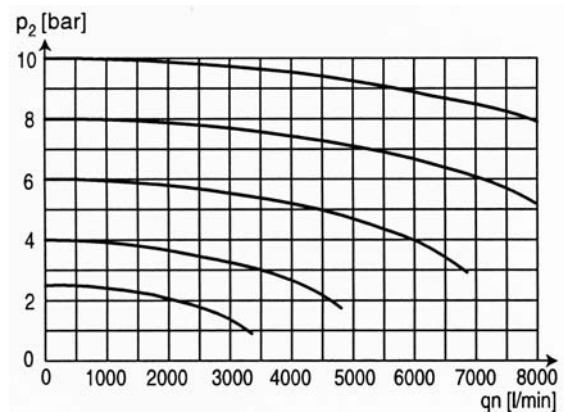
**DAY-938, DAY-912**



**Flow characteristic DAY-914, DAY-937**

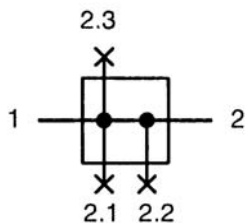


**Flow characteristic DAY-938, DAY-912**

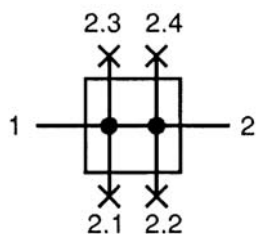


**Technical data for series**

# TY



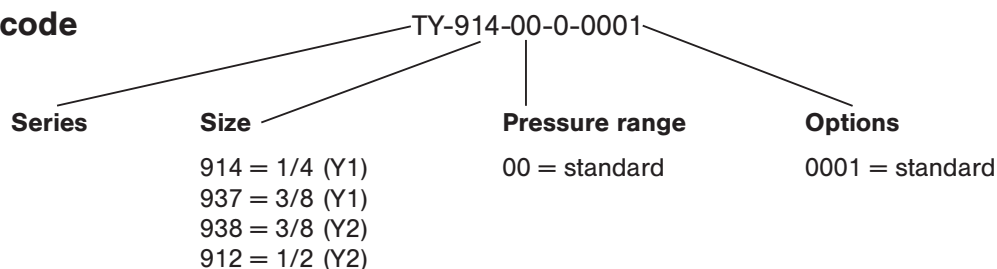
**Series Y1**



**Series Y2**



**Order code**



Order number	TY-914-00-0-0001	TY-937-00-0-0001	TY-938-00-0-0001	TY-912-00-0-0001
Connection	1/4 NPTF	3/8 NPTF	3/8 NPTF	1/2 NPTF
Outlets	4 x 1/4 NPTF	1 x 3/8 NPTF 3 x 1/4 NPTF	3 x 3/8 NPTF 1 x 1/4 NPTF 1 x 1/2 NPTF	2 x 1/2 NPTF 2 x 3/8 NPTF 1 x 1/4 NPTF
Series	Y1		Y2	
Mounting	with bracket or in-line, horizontal or vertical			
Pressure range	0 ... 16 bar (0 ... 232 psi)			
Flow rate	2700 NI/min (2.744 Cv)	3600 NI/min (3.659 Cv)	7250 NI/min (7.368 Cv)	11000 NI/min (11.179 Cv)
Temperature range	0 °C ... + 60 °C (+ 32 °F ... + 140 °F)			
Materials	Housing: Grivory (PA66); Connection: die cast Zinc			
Weight*	0.250 kg (0.551 lb.)			

\* = outlet ports see page 11.059.



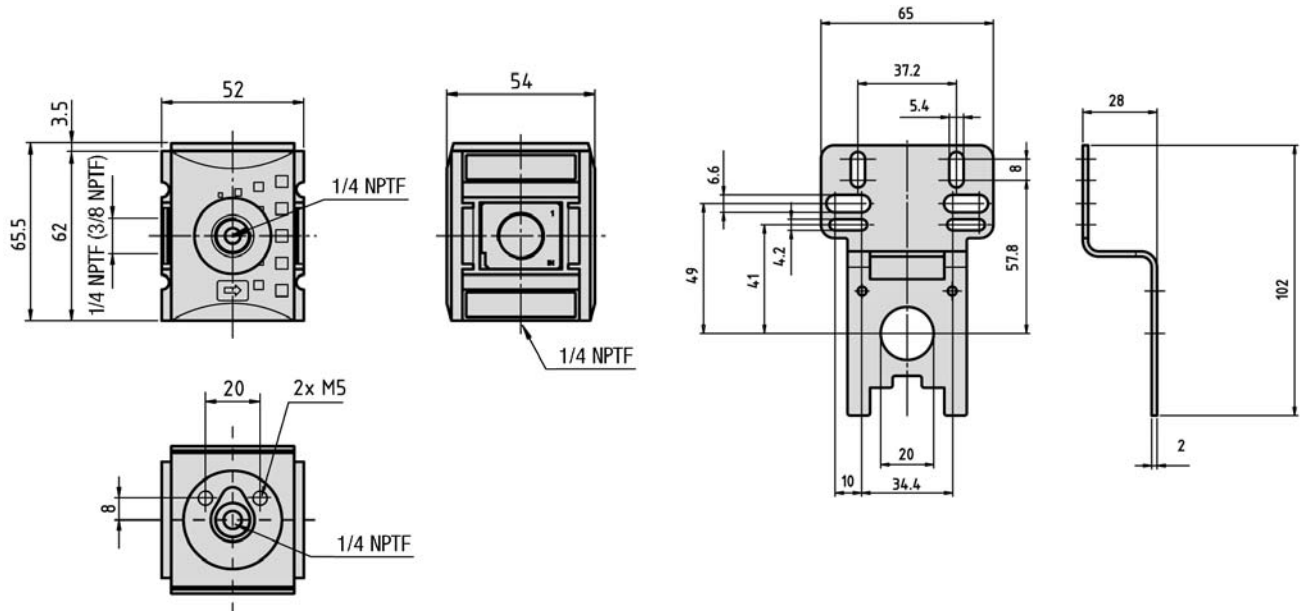
**Series Y**  
**Distribution block**  
**1/4 NPTF – 1/2 NPTF**



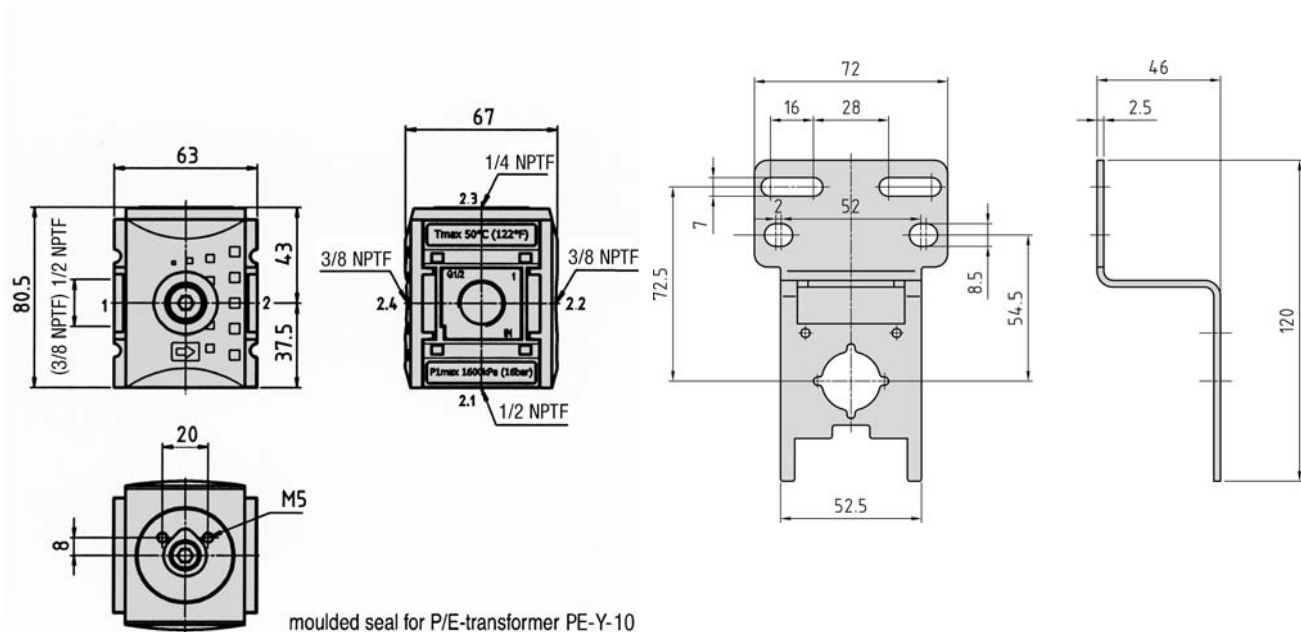
**Dimensions for series**

**TY**

**TY-914, TY-937**



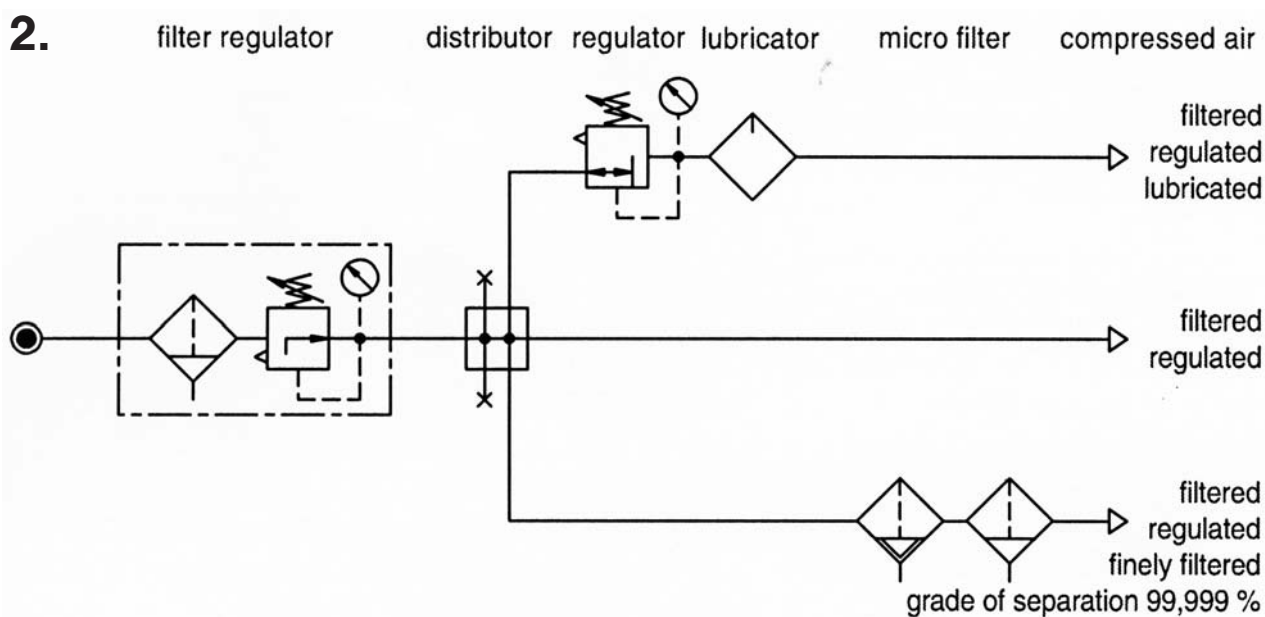
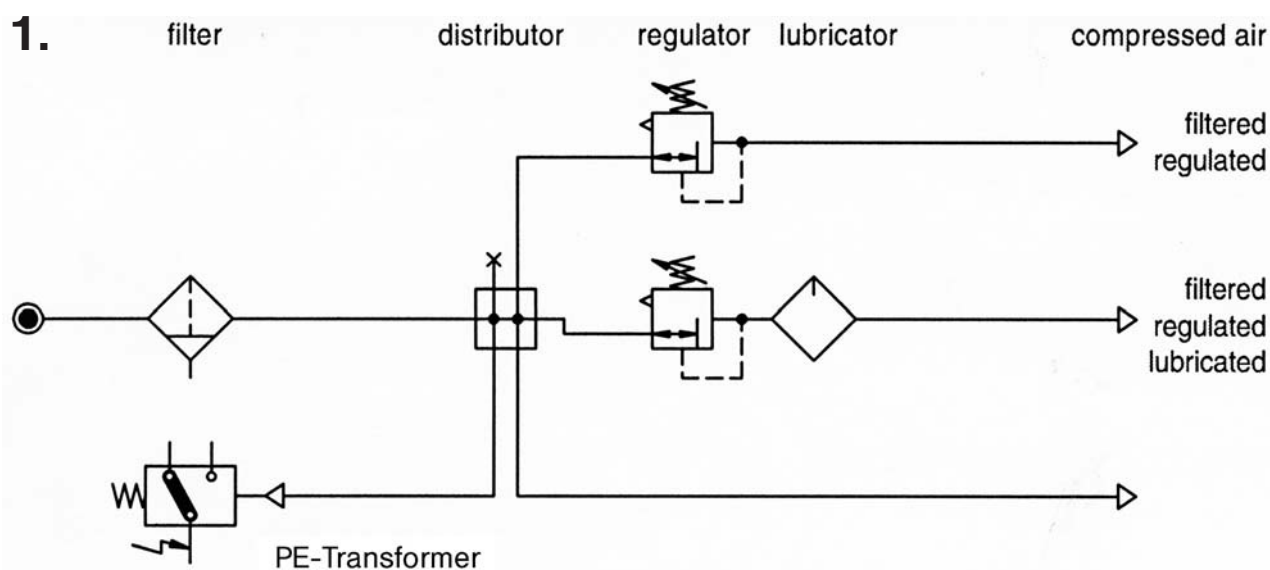
**TY-938, TY-912**



**Dimensions for series**

# TY

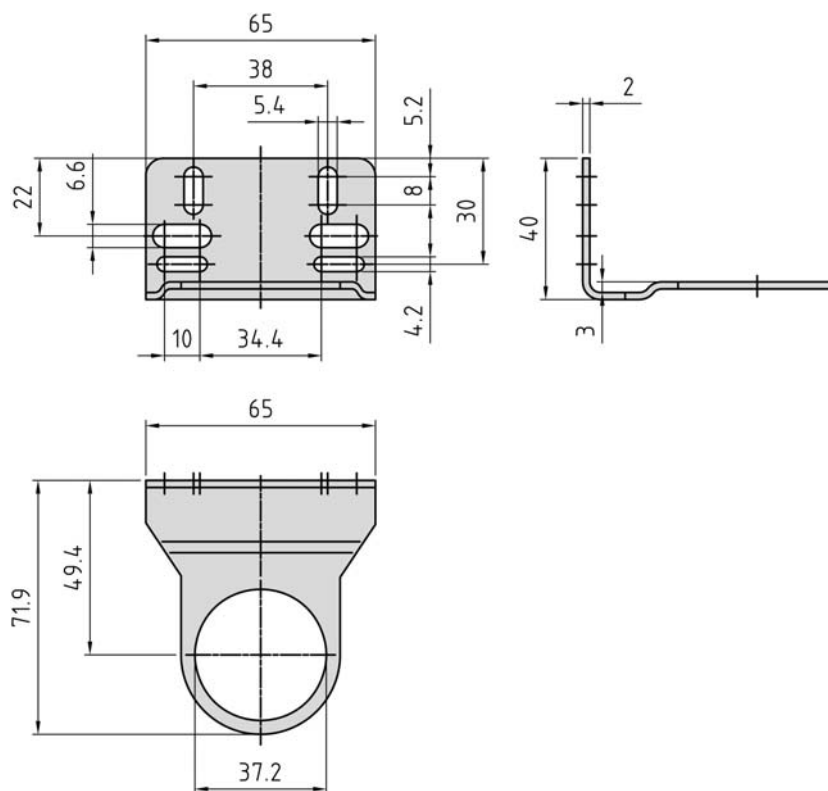
Areas of application for TY-914, TY-937, TY-938, TY-912



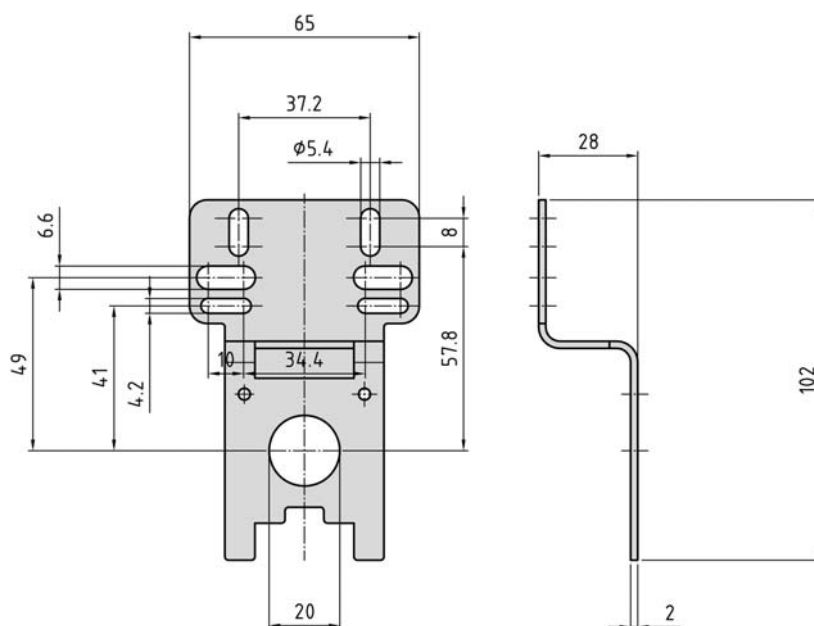
**Accessories for series**

**Y**

**Mounting brackets WYL-01**



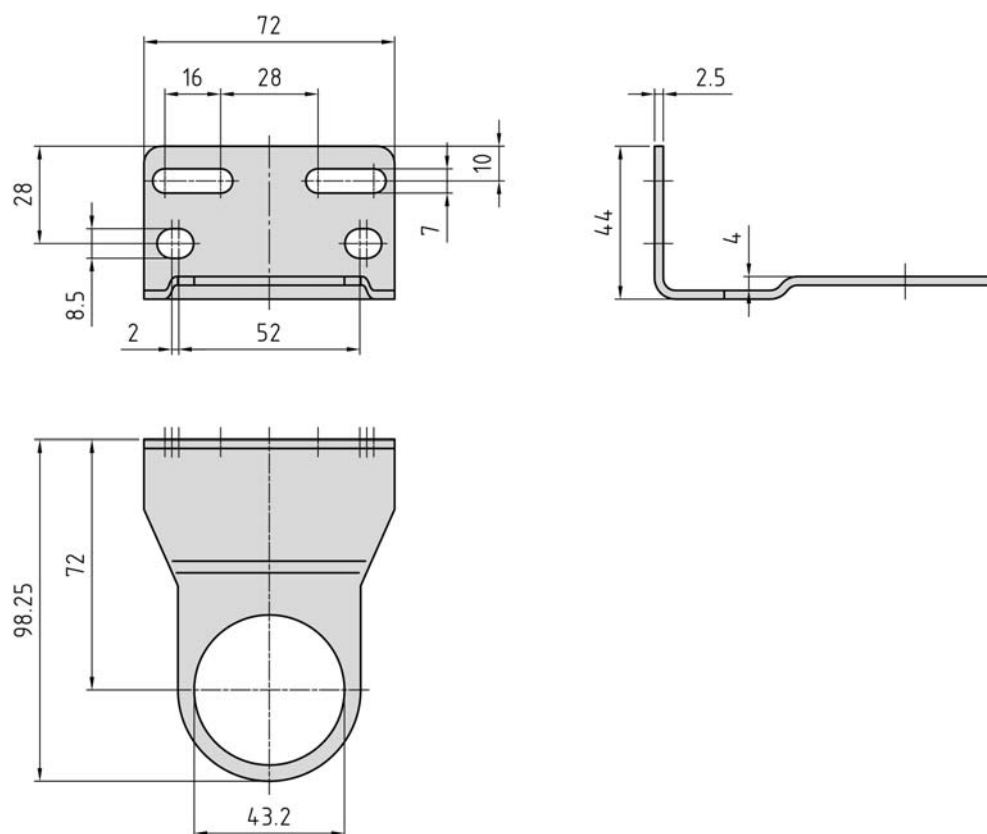
**Mounting brackets WYP-01**



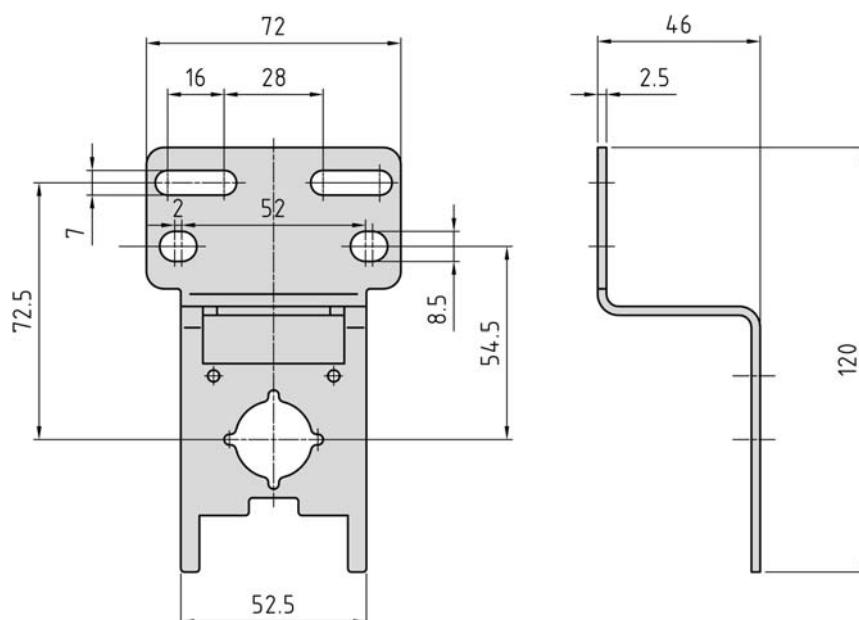
**Accessories for series**

**Y**

**Mounting brackets WYL-02**



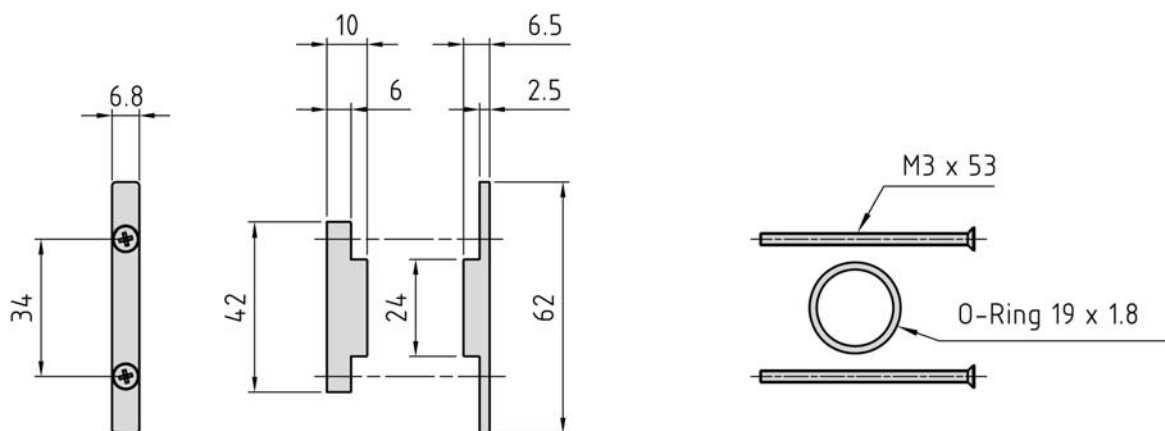
**Mounting brackets WYP-02**



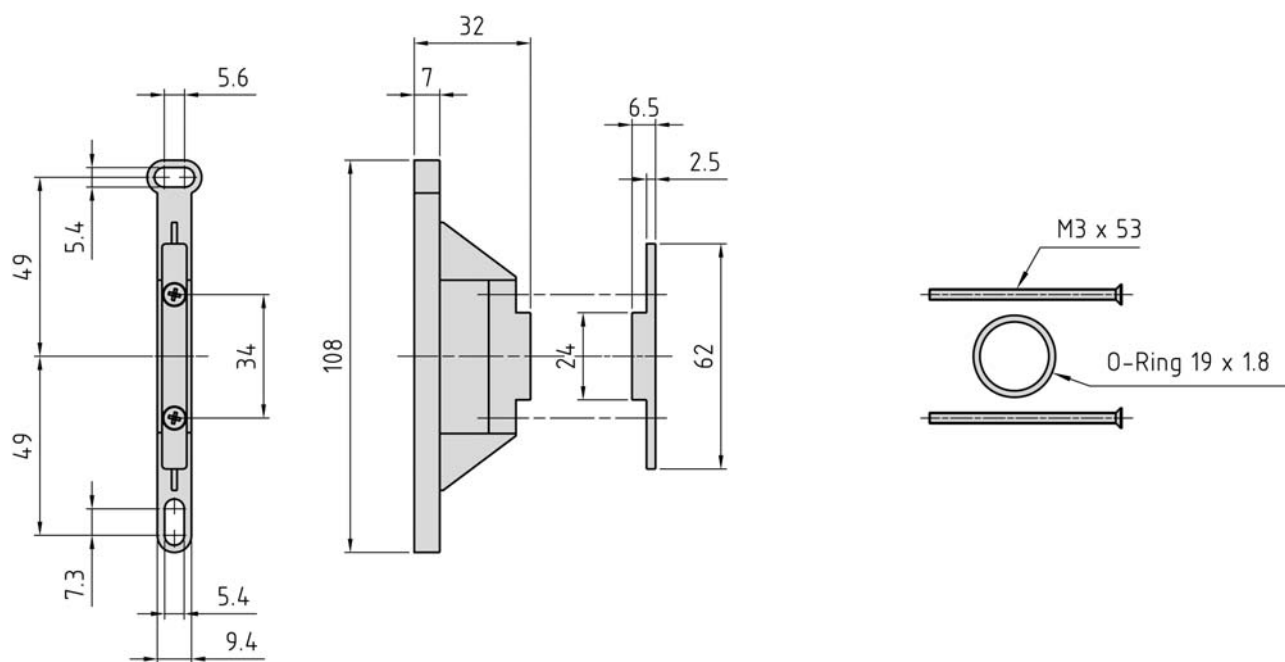
**Accessories for series**

**Y**

**Coupling kits KPY-01-K**



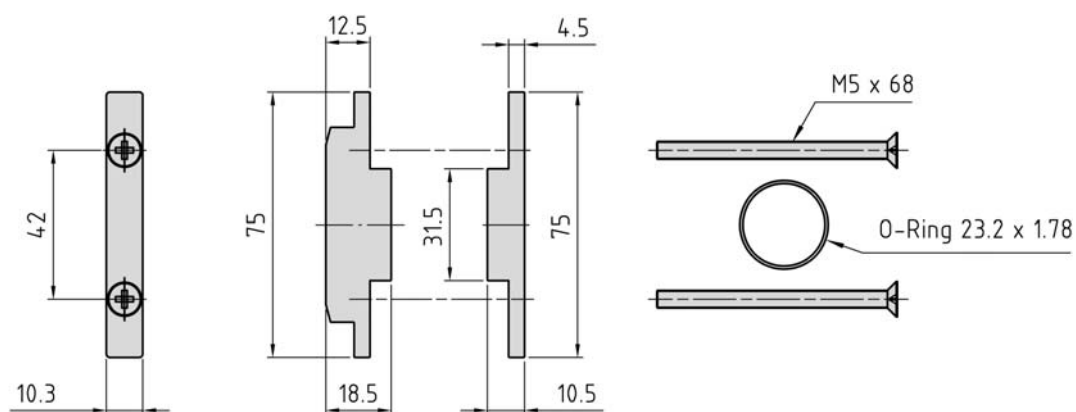
**Coupling kits KPY-01-W**



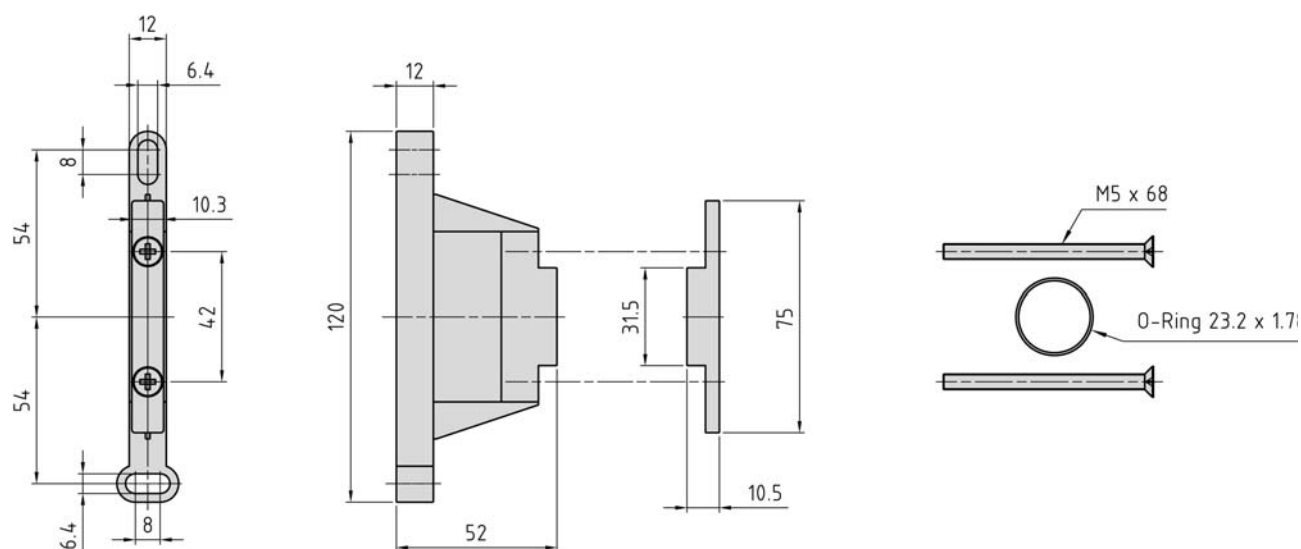
**Accessories for series**

**Y**

**Coupling kits KPY-02-K**



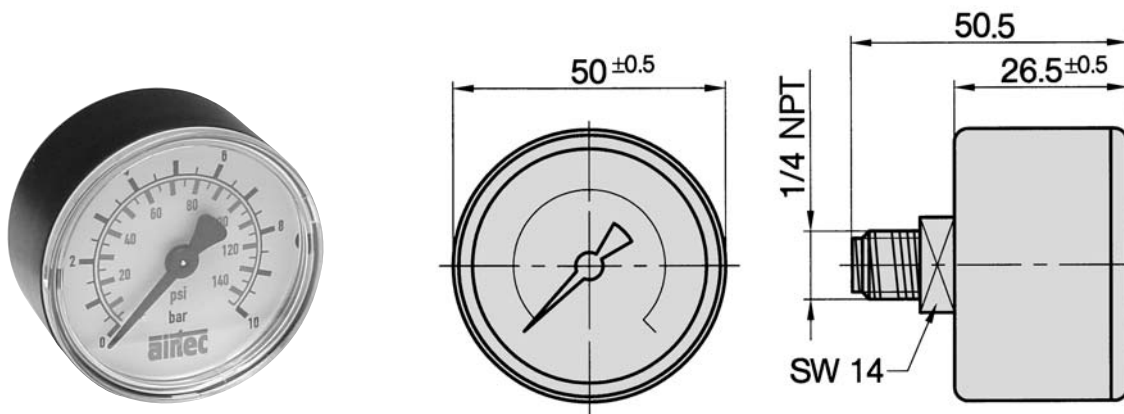
**Coupling kits for wall mounting KPY-02-W**



**Accessories for series**

**Y**

**Pressure gauge MXA-50**

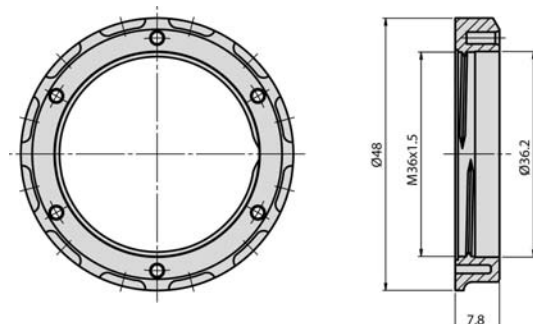


Sealing for assembly of gauge is included.

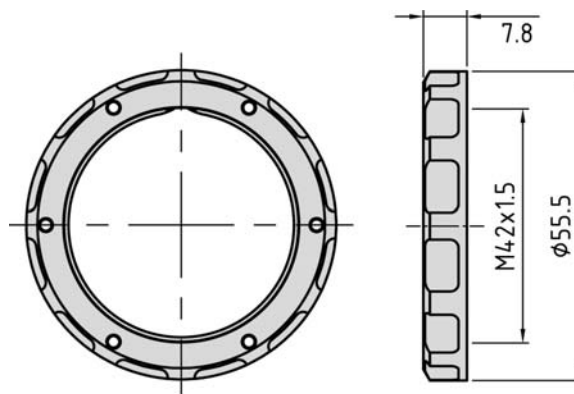
Order number	MXA-50-145-914	MXA-50-232-914
Ranges	0 ... 10 bar (0 ... 145 psi)	0 ... 16 bar (0 ... 232 psi)
Application	Constant load 3/4 x scale value Alternating load 2/3 x scale value	
Materials	Body : Plastic, highly shock resistant, black (ABS) Window : Plexiglass, convex, clipped-on Dial : Plastic, white with stop pin, scale black or blue Pointer : Plastic, black Movement : CuZn alloy Measuring element: Cu alloy	
Temperature range	– 40 °C ... + 60 °C (– 40 °F ... + 140 °F)	
Accuracy class	2.5 according to EN 837-1	
Temperature drift	0.4 % / 10 K if deviation from normal temperature 20 °C (68 °F).	
Weight	0.071 kg (0.156 lb.)	

**Mounting nut RMY-01**

material: plastic



**Mounting nut RMY-02**

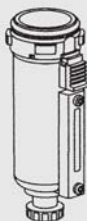




**Accessories for series**

**Y**

**Serie Y1**



metal bowl with condensate drain  
**BE-Y1-HA** semi-automatic  
**BE-Y1-AM-NC** automatic normally closed  
**BE-Y1-AM-NO** automatic normally open



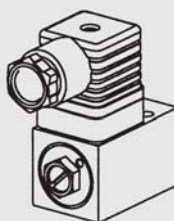
metal bowl without drain,  
 for activated carbon filter  
**BE-Y1-KF**



metal bowl without drain,  
 for lubricator  
**BE-Y1-L**



auto drain  
**AM-Y-NC** normally closed  
**AM-Y-NO** normally open

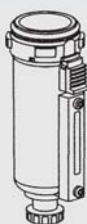


transformer  
**PE-Y-10**

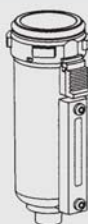


lock  
**VH-Y-32** with key  
**VH-Y-31** without key

**Serie Y2**



metal bowl with condensate drain  
**BE-Y2-HA** semi-automatic  
**BE-Y2-AM-NC** automatic normally closed  
**BE-Y2-AM-NO** automatic normally open



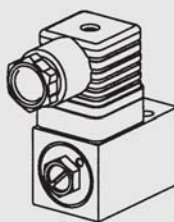
metal bowl without drain,  
 for activated carbon filter  
**BE-Y2-KF**



metal bowl without drain,  
 for lubricator  
**BE-Y2-L**



auto drain  
**AM-Y-NC** normally closed  
**AM-Y-NO** normally open



transformer  
**PE-Y-10**



lock  
**VH-Y-32** with key  
**VH-Y-31** without key

Please  
visit our  
Homepage

**[www.airtec.de](http://www.airtec.de)**

## Note

---

## Note

---



**AIRTEC Pneumatic GmbH**  
**Westerbachstraße 7**  
**61476 Kronberg**  
**Telefon: 06173 9562-0**  
**Telefax: 06173 9562-49 (Inland)**  
**06173 9562-13 (International)**  
**Internet: [www.airtec.de](http://www.airtec.de)**  
**E-Mail: [Info@airtec.de](mailto:Info@airtec.de)**